



Organisation intergouvernementale pour les transports internationaux ferroviaires  
Zwischenstaatliche Organisation für den internationalen Eisenbahnverkehr  
Intergovernmental Organisation for International Carriage by Rail

---

**Groupe de travail TECH**

**Arbeitsgruppe TECH**

**Working Group TECH**

**TECH-25029**

**21.05.2025**

Original : EN

## **55<sup>TH</sup> SESSION**

---

Draft guide for the application of the Uniform Technical Prescription applicable to the accessibility of the rail system for persons with disabilities and persons with reduced mobility (UTP PRM) of 1 January 2026

*This document is a guide for the application of the Uniform Technical Prescription applicable to the accessibility of the rail system for persons with disabilities and persons with reduced mobility (UTP PRM). It relates to the UTP PRM version of 1 January 2026. It provides guidance, e.g. for assessing entities and competent authorities and it does not contain any legal requirements. The purpose of this document is solely to facilitate the uniform application of the UTP PRM. For the applicable legal requirements, see UTP PRM.*

## 0. DOCUMENT INFORMATION

The basis of this document is the [European Union Agency for Railways \(ERA\) Guide for the application of the PRM TSI with reference ERA/GUI/02-2013/INT Application guide GUI/PRM-TSI/2023 version 2.0 dated 8 December 2023 \(exists in English only\)](#).

Because the PRM TSI and UTP PRM are equivalent in the meaning of Article 13 § 4 letter b) of the APTU UR, much of the information in the TSI application guide is also relevant to application of the UTP. The texts of the TSI application guide are therefore reproduced in this guide for the application of the UTP.

Chapter 0 and tThe blue rectangles ~~such as this one~~ in this document, ~~such as the one this text is written in~~, contain information relevant to the application of the ~~OTIF-UTP PRM, applicable to the accessibility of the rail system: for persons with reduced mobility which is in force as of 1.1.2015 and further referred to as UTP PRM 2015.~~

Therefore, aAll original OTIF text in this application guide~~edited by OTIF is~~ are in blue rectangles, ~~which means that without the blue rectangles the content of this document corresponds exactly to the ERA application guide.~~ All other texts have been carried over from the TSI application guide issued by ERA. As a general principle, where the guide refers to “TSI”, this can also be taken to cover the “UTP”. Where the guide uses the term “Member State”, this corresponds to the term “Contracting State” in the meaning of COTIF. Where this is not the case, this is pointed out specifically.

~~The following EU terms are to be considered as follows:~~

- ~~• EU: Notified Body — OTIF: Assessing Entity~~
- ~~• EC Declaration of Verification — OTIF: there is no mandatory equivalence in COTIF. As COTIF is a States Convention, the final responsibility for compliance with the UTP is at State level, evidenced by a technical Certificate in accordance with ATMF Articles 10 and 11.~~

The UTP uses a two-column layout: full-width text corresponds to the TSI, while two-column text indicates differences between the UTP (left column, OTIF rules) and TSI (right column, EU rules). “Reserved” in the left-hand column indicates content that ~~is not harmonised at the UTP level, i.e. it is subject to the rules applicable in the Contracting State concerned.~~

The guide is fully revised and reformatted into a new, updated version.

As there was only an English source document, the guide does not currently exist in French or German.

<u>Reference</u>	<u>Date</u>	<u>Description</u>
<a href="#">A 92-01/1.2015</a>	<a href="#">2.2.2015</a>	<a href="#">Initial version approved by WG Tech 25.</a> <a href="#">The guide was updated to V0.2 on 18.5.2015, by removing the reference to the Swiss standards on page 42 (Appendix 1)</a>
<a href="#">TECH-25029, version 1</a>	<a href="#">21.5.2025</a>	<a href="#">Working document for WG Tech 55</a> <a href="#">Modifications to mirror the latest version of the ERA TSI application guide.</a>

		<a href="#">Tracked changes compared to the version approved by WG Tech 25 and updated on 18.5.2015</a>
--	--	---

0.	DOCUMENT INFORMATION	2
1.	SCOPE OF THIS GUIDE	5
1.1	Content of the guide	5
1.2	Document reference/s	6
1.3	Definitions and abbreviations	6
2.	General parameters	11
2.1	Clarification of the 2 categories specified for the infrastructure subsystem	11
2.2	Contrast	12
2.3	Tactile	12
2.4	Readability of a typeface	13
2.5	Palm operation	13
2.6	Slip resistance of Floor surfaces	13
3.1	Scope of subsystems and definitions	13
3.2	Characterisation of the Infrastructure subsystems	15
3.3	Characterisation of the Rolling Stock subsystem	29
3.4	Operating rules	39
3.5	Interoperability Constituents	42
3.6	Assessment of conformity and/or suitability for use	45
3.7	Implementation of the TSI	46
3.8	Appendices of the PRM TSI	48
4.	Conformity assessment	48
4.1	Assessment of the parameters of the 2 <sup>nd</sup> category	48
5.	APPLICABLE SPECIFICATIONS AND STANDARDS	51

# 1. SCOPE OF THIS GUIDE

## 1.1 Content of the guide~~Scope~~

### Scope

This document is an annex to the Guide for the application of TSIs<sup>1</sup>. It provides information on the application of the Commission Regulation (EU) No 1300/2014 of 18 November 2014 on the technical specifications for interoperability relating to accessibility of the Union's rail system for persons with disabilities and persons with reduced mobility ([PRM TSI](#)).

This version 2023 of the guide is updated based on the Commission Implementing Regulation (EU) 2023/1694 of 10 August 2023 amending Regulations (EU) No 321/2013, (EU) No 1299/2014, (EU) No 1300/2014, (EU) No 1301/2014, (EU) No 1302/2014, (EU) No 1304/2014 and Implementing Regulation (EU) 2019/777.

The guide should be read and used only in conjunction with the PRM TSI. It is intended to facilitate its application, but does not replace it.

The general part of the 'Guide for the application of TSIs' should also be considered.

The information in this guide relates equally to the application of the UTP PRM in the version that entered into force on 1 January 2026. The PRM TSI application guide on which this document is based is published on the website of the European Union Railway Agency for Railways:

~~<http://www.era.europa.eu/Document-Register/Pages/TSI-Application-Guide-PRM-TSI.aspx>~~

[https://www.era.europa.eu/system/files/2023-12/PRM\\_TSI\\_Guide.pdf?t=1741595112](https://www.era.europa.eu/system/files/2023-12/PRM_TSI_Guide.pdf?t=1741595112)

~~At time of writing no OTIF equivalent to the "Guide for the Application of TSIs" exists. The application of UTPs is set out in ATMF. Explanations to ATMF are contained in the Explanatory report to COTIF, which is available from the OTIF website:~~

~~[http://www.otif.org/fileadmin/user\\_upload/otif\\_verlinkte\\_files/07\\_veroeff/03\\_erlaeut/COTIF-Rapport-explicatif-01-01-2011-e.pdf](http://www.otif.org/fileadmin/user_upload/otif_verlinkte_files/07_veroeff/03_erlaeut/COTIF-Rapport-explicatif-01-01-2011-e.pdf)~~

## ~~1.2. Content of the guide~~

### Content of the guide

In the following sections of this document, extracts of the original text of the PRM TSI are provided, in a shaded text box, and these are followed by a text that gives guidance.

In few cases the extracts of the original text from the TSI PRM differ in terms of content from the provisions stated in the UTP PRM. In such cases these original extracts (from TSI PRM) are followed with blue boxes providing the extracts from the UTP PRM. ~~These blue boxes always begin with the statement: "The text quoted from the PRM TSI is not identical to the text in the UTP PRM, the UTP reads:"~~

Guidance is not provided for points where the TSI requires no further explanation.

Guidance is of voluntary application. It does not mandate any requirement in addition to those set out in the TSI.

Guidance is given by means of further explanatory text and, where relevant, by reference to standards that demonstrate compliance with the TSI; relevant standards are listed in chapter 5 of this document.

The standards that are listed shall never be considered as the only acceptable means to comply with the TSI requirements.

The guide also contains some indications for the implementation strategy.

## ~~→ 1.3. Reference documents~~

## 1.2 Document -reference/s

Reference documents are listed in the general part of the ‘Guide for the application of TSIs’.

~~Users of the guide are also invited to consult the ERA technical opinions and advices webpage where further clarifications, explanations or corrections of the TSI are regularly published:~~

### Opinions and advices

~~Finally, the Questions and Clarifications and Recommendations for use issued by NB-Rail (Association of Notified Bodies) also represent a good source of clarifications:~~

### Nb-rail documents

~~Where necessary OTIF will work together with ERA to publish equivalent clarifications, explanations or corrections in accordance with the appropriate processes as defined in COTIF.~~

## ~~1.4. Definitions and abbreviations~~

## 1.3 Definitions and abbreviations

~~Definitions~~ General terms and abbreviations are ~~given~~ defined in the PRM TSI, points 2.2 and 2.3 and in the general part of the ‘Guide for the application of TSIs’.

Tables 1 (definitions) and 2 (abbreviations) are not included in the EU guide for the application of the PRM TSI, as corresponding definitions and abbreviations are included in the general part of the TSI application guides. As this general part is not taken over by OTIF, these tables are included in this application guide, with the exception of terms that are EU-specific and not in scope of the UTP.

<u>Table 1: definitions</u>	
<u>TERM</u>	<u>DEFINITION/ SOURCE</u>
<u>Basic parameter</u>	<u>Any regulatory, technical or operational condition which is critical to interoperability and is specified in the relevant UTPs</u>
<u>Basic design characteristics</u>	<u>Parameters that are used to identify the vehicle type as specified in the issued vehicle type admission and covered by a type examination certificate or design examination certificate or as specified in the issued vehicle type authorisation and recorded in the European Register of Authorised Vehicle Types (“ERATV”)</u>
<u>Conformity assessment</u>	<u>Process demonstrating whether specified requirements relating to a product, process, service, subsystem, person or body have been fulfilled</u>
<u>Conformity assessment body</u>	<u>Body that has been notified or designated to be responsible for conformity assessment activities, including calibration, testing, certification and inspection in accordance with Article 5 of the ATMF UR and UTP GEN-E</u>
<u>Contracting entity</u>	<u>Public or private entity which orders the design and/or construction or the renewal or upgrading of a subsystem</u>
<u>European Register of Authorised Types of Vehicles (ERATV)</u>	<u>EU register of types of vehicles authorised by the Member States for placing in service. It contains the technical characteristics of vehicle types as defined in the relevant TSIs, the manufacturer’s name, dates, references and Member States granting authorisations, restrictions and withdrawals (Article 48 of Directive (EU) 2016/797). At the time this guide was published, no similar register was established under COTIF</u>
<u>Existing rail system</u>	<u>Infrastructure composed of lines and fixed installations of the existing rail network as well as vehicles of all categories and origin travelling on that infrastructure</u>

<b><u>Table 1: definitions</u></b>	
<b><u>TERM</u></b>	<b><u>DEFINITION/ SOURCE</u></b>
<u>Harmonised standard</u>	<u>European standard adopted on the basis of a request made by the European Commission for the application of Union harmonising legislation (Article 2(1)(c) of Regulation (EU) No 1025/2012)</u>
<u>Open point</u>	<u>Certain technical aspect corresponding to the essential requirements, which cannot be explicitly covered in a UTP</u>
<u>Project at an advanced stage of development</u>	<u>Any project the planning or construction stage of which has reached a point where a change in the technical specifications may compromise the viability of the project as planned</u>
<u>Register of infrastructure (RINF)</u>	<u>Register of infrastructure indicates the main features of fixed installations, covered by the subsystems: infrastructure, energy and parts of control-command and signalling. In it are published performance and technical characteristics mainly related to interfaces with rolling stock and operation (Article 49 of Directive (EU) 2016/797). At the time this guide was published, no similar register was established under COTIF.</u>
<u>Renewal</u>	<u>Any major substitution work on a subsystem or part of it, which does not change the overall performance of the subsystem</u>
<u>Specific case</u>	<u>Any part of the rail system which requires special provisions in the TSIs or UTPs, which may either be permanent because of geographical, topographical or urban environment constraints, or which affect compatibility with the existing system. With regard to the European Union, this concerns in particular railway lines and networks isolated from the rest of the Union, the loading gauge, the track gauge or space between the tracks and vehicles strictly intended for local, regional or historical use, as well as vehicles originating from or destined for third countries (Article 2(13) of Directive (EU) 2016/797)</u>
<u>Substitution in the framework of maintenance</u>	<u>Any replacement of components by parts with an identical function and performance in the framework of preventive or corrective maintenance</u>
<u>Upgrading</u>	<u>Any major modification work on a subsystem or part of it which results in a change in the technical file, and which improves the overall performance of the subsystem</u>

<b><u>Table 2: Abbreviations</u></b>	
<b><u>ABBREVIATION</u></b>	<b><u>FULL TEXT</u></b>
<u>CEN</u>	<u>European Committee for Standardisation</u>
<u>EC</u>	<u>European Commission</u>
<u>EN</u>	<u>European standard</u>
<u>ERA</u>	<u>European Union Agency for Railways also called “the Agency”</u>
<u>ERADIS</u>	<u>Interoperability and Safety database managed by the European Union Agency for railways</u>
<u>ERATV</u>	<u>European Register of Authorised Types of Vehicles</u>
<u>ERTMS</u>	<u>European Rail Traffic Management System</u>
<u>ETCS</u>	<u>European Train Control System</u>
<u>EU</u>	<u>European Union</u>
<u>IC</u>	<u>Interoperability Constituent</u>
<u>IM</u>	<u>Infrastructure Manager</u>
<u>INF</u>	<u>Infrastructure</u>
<u>ISO</u>	<u>International Organisation for Standardisation</u>

**Table 2: Abbreviations**

<b><u>ABBREVIATION</u></b>	<b><u>FULL TEXT</u></b>
<u>ISV</u>	<u>Intermediate Statement Verification</u>
<u>MS</u>	<u>EU or EEA Member State</u>
<u>NoBo</u>	<u>Notified Body</u>
<u>NB-Rail</u>	<u>Coordination group of notified bodies for railway products and systems</u>
<u>NSA</u>	<u>National Safety Authority</u>
<u>OCL</u>	<u>Overhead Contact Line</u>
<u>OJ/OJEU</u>	<u>Official Journal of the European Union</u>
<u>PRM</u>	<u>Person with Disabilities or Person with Reduced Mobility</u>
<u>RINF</u>	<u>Register of Infrastructure</u>
<u>RST</u>	<u>Rolling Stock</u>
<u>RU</u>	<u>Railway Undertaking</u>
<u>SRT</u>	<u>Safety in Railway Tunnels</u>
<u>TR</u>	<u>Technical Report</u>
<u>TS</u>	<u>Technical Specification</u>
<u>TSI</u>	<u>Technical Specification for Interoperability</u>
<u>UIC</u>	<u>International Union of Railways (Union Internationale des Chemins de Fer)</u>
<u>WG</u>	<u>Working Group</u>
<u>WP</u>	<u>Working Party</u>

Definitions and abbreviations within the meaning of COTIF are set out in Article 2 of the APTU UR (Appendix F to COTIF) and Article 2 of the ATMF UR (Appendix G to COTIF), as well as in the UTPs referred to throughout this application guide.

Because the purpose and scope of COTIF and EU law are not the same, different terminology has been used for concepts that have a similar, but not identical meaning. As a result, the table of corresponding terms has been added to the UTP PRM in section 0 – Equivalence and application. The table has been included in this application guide to facilitate understanding throughout the text:

<u>This application guide</u>	<u>EU law</u>
<u>Uniform Technical Prescription (UTP)</u>	<u>Technical Specification for Interoperability (TSI)</u>
<u>UTP verification procedure</u>	<u>EC verification procedure</u>
<u>Assessing Entity</u>	<u>Notified Body</u>
<u>Assessment procedures for the verification of subsystems (modules)</u>	<u>EC verification of a subsystem (modules)</u>
<u>Competent Authority</u>	<u>National Safety Authority or authorising entity</u>



<u>Contracting State</u>	<u>Member State</u>
<u>Type or design examination certificate</u>	<u>EC type or design examination certificate</u>

## 2. ~~CLARIFICATIONS ON THE PRM TSI~~

### ~~UTP Section 0: Equivalence and transitional provisions~~

The UTP PRM is equivalent to the EU regulations PRM TSI, however

- ~~— The UTP PRM specifies vehicle related parameters and infrastructure related parameters. The vehicle related parameters in UTP PRM are mandatory for admissions of vehicles according to ATMF in the scope of UTP PRM. On the other hand the application of infrastructure related parameters, in particular those for stations and platforms, are voluntary.~~

~~General information regarding the use of UTPs in the scope of COTIF Appendix F (ATMF):~~

- ~~— The admission of vehicles to international traffic in the scope of COTIF should be done in accordance with ATMF (Art.3 §1). This means that the Contracting States should organise its procedures and discharge of responsibilities in accordance with ATMF. As a result, only Contracting States that have properly implemented procedures and responsibilities in accordance with ATMF can grant admission to international operation of vehicles in the meaning of COTIF.~~
- ~~— Article 7 makes mandatory for admission to international traffic, the application of UTPs (where available) and RID (where applicable). Vehicles in the scope of the UTP PRM should comply not only with the vehicle related provisions of the UTP PRM but also with the applicable provisions of the UTP LOC&PAS, UTP NOI and UTP for vehicle marking.~~
- ~~— Article 7a, which is implemented in ATMF Annex B, sets out the conditions and procedures to be followed for not applying UTPs as a result of derogations. In case a vehicle is subject to derogation, its admission to operation is not automatically valid in other Contracting States.~~
- ~~— Article 6 sets out the conditions for the validity of admissions in international traffic. It sets out in particular two situations:
 
  - ~~○ Vehicles meeting all essential requirements through full compliance with the UTPs, as set out in Article 6 §3: the UTPs cover all essential requirements and there are no open points related to network compatibility. If in such case the UTPs are applied without specific cases or derogations, the admission in one CS gives admission in all other CSs. As a result a RU may operate the vehicle on compatible infrastructure.~~
  - ~~○ Vehicles not meeting the conditions of Article 6 § 3, become subject of Article 6 §4. I.e. the vehicle is not compliant with the UTPs, or a specific case related to compatibility applies, or a derogation applies; the vehicle must receive individual admission in each CS where it is intended to be operated. However, each CS's competent authority should accept the verifications based of UTPs that have been made by other competent authorities.~~~~
- ~~- Article 3a sets out the interaction between EU law and ATMF. In particular it sets out the provisions for recognition of EU authorisations in non EU Contracting States (in § 1) and the recognition of non EU admissions by Member States of the EU (in § 2). It also clarifies that for the authorisation of vehicles intended to be operated only in the EU, EU law applies.~~

## 2.1—Scope of the TSI

### *Scope related to Infrastructure*

*This TSI applies to all the public areas of stations dedicated to the transport of passengers that are controlled by the Railway Undertaking, Infrastructure Manager or Station Manager. This includes the provision of information, the purchase of a ticket and its validation if needed, and the possibility to wait for the train.*

The text quoted from the LOC&PAS is not identical to the text in the UTP, as application of the UTP PRM is not mandatory for infrastructure, the UTP reads:

### *Scope related to Infrastructure*

*The application of the UTP to stations on international lines is voluntary, but is recommended.*

That definition of the scope related to infrastructure clarifies that only those parts of the stations **dedicated to transport** are concerned (and not shopping malls for instance). Also, it clarifies that the TSI applies only to stations and not to (for instance) emergency exits, safe areas in tunnels or level crossings that are not part of the obstacle free route of a station.

Areas that are not controlled by the Railway Undertaking, Infrastructure Manager or Station Manager (either directly or through subcontractors) are out of scope; this can be the case, for instance, of car parks.

## 2.2—Definitions

### 2.2.1—Definition of PRMs

*"Person with disabilities and person with reduced mobility" means any person who has a permanent or temporary physical, mental, intellectual or sensory impairment which, in interaction with various barriers, may hinder their full and effective use of transport on an equal basis with other passengers or whose mobility when using transport is reduced due to age.*

*The transport of oversized items (for example: bicycles and bulky luggage) is not within the scope of this TSI.*

The definition above is derived from the article 1 of the United Nations Convention on the Rights of Persons with Disabilities. It does not specifically include people with children, people with bulky luggage, and foreign people with lack of knowledge of the local language. It does not include automatically elderly people and pregnant women.

Concerning those last two categories, they do not systematically lead to reduced mobility, but obviously old age can decrease the speed and ability with which passengers can move within the station or rolling stock environment. Therefore, elder passengers can be considered as persons with reduced mobility when compared with the average passenger. Similarly, pregnancy is not systematically a cause of reduced mobility. However, when a pregnant passenger's mobility is affected (for example preventing her from moving easily and quickly), then she may be considered a person with reduced mobility.

Consequently, the number of priority seats has not been affected by the change of definition. Also, the pictograms used to indicate priority seats have not been modified either: the symbols representing a pregnant woman and elder person are worldwide recognized.

### 2.2.2 Other definitions

#### **Level access**

*A level access is an access from a platform to the doorway of a rolling stock for which it can be demonstrated that:*

*The gap between the door sill of that doorway (or of the extended bridging plate of that doorway) and the platform does not exceed 75 mm measured horizontally and 50 mm measured vertically and*

*The rolling stock has no internal step between the door sill and the vestibule.*

For this demonstration the gap should be calculated according to the requirements in TSI PRM points 4.2.2.11.1 (1) and (2) (with  $\delta h$  = horizontal gap and  $\delta v$  = vertical gap), and the point 2.5.10 of the present Application Guide, considering a track radius 300 m and straight level track.

## 3.2. GENERAL PARAMETERS

### 3.2.1 Clarification of the ~~two~~ 2 categories specified for the infrastructure subsystem (point 4.2.1)

#### Point 4.2.1: Infrastructure Subsystem

*(2) The basic parameters that are specified in points 4.2.1.1 – 4.2.1.15 apply to the scope of the infrastructure subsystem that is defined in point 2.1.1; they can be divided into two categories:*

- *Those for which technical details need to be specified, such as the parameters relative to the platforms and how to reach the platforms. In this first case, the basic parameters are specifically described and the technical details to be satisfied in order to fulfil the requirement are detailed.*
- *Those for which technical details are not necessary to be specified, such as the value of ramps or the characteristics of parking places. In this second case, the basic parameter is defined as a functional requirement that can be met by applying several technical solutions.*

*(...)*

The application of the UTP to stations on international lines is not mandatory, but is recommended.

Regarding the ~~second~~ 2<sup>nd</sup> category of basic parameters, the ~~W~~working ~~P~~party drafting the PRM TSI ensured that they can always be covered by an international (ISO) or European (EN) standard, with a few exceptions<sup>1</sup>.

Therefore, for those parameters, the TSI is deliberately specifying a high level functional requirement: the present ~~A~~application ~~G~~uide lists some international and European standards that the applicant may apply in order to meet this functional requirement.

The application of these standards remains voluntary, and the applicant can always apply other standards to meet the requirements. As a matter of fact, the functional requirements are also generally covered by national, regional or local standards and sometimes even by company rules.

The principles for the application of other standards than the ones that are listed in this application guide are the following:

<sup>1</sup> In exceptional cases where a parameter is not covered by an international standard, a European standard and not either covered by a more local standard, it is possible to utilize standards from another EU Member States or from another region of the Member State.

- National/regional/local standards can be applied when they provide an equivalent solution than the one specified in the standards listed in this guide.
- National/regional/local standards can only be applied on the territory they cover: one of the reasons for removing some detailed requirements from the TSI is to allow some harmonization at local level. An applicant that would intend to use a “foreign” standard would strictly be in contradiction with this objective.
- Company rules can be used when they are derived from the above standards or when they have been validated by a representative group of users.

Equivalence is to be understood as “having the same or a similar effect” as per the definition of Collins dictionary:

*Equivalent, adjective*

1. *equal or interchangeable in value, quantity, significance, etc*
2. *having the same or a similar effect or meaning.*

Examples of equivalent solutions are given in [Appendix 1](#).

In the following points, those requirements are called “parameters of the 2<sup>nd</sup> category”.

Guidance for the assessment of the parameters of the 2<sup>nd</sup> category is given in chapter [4.13](#).

### **[3.2.2](#) Contrast**

Contrast is a parameter of the ~~second~~<sup>2<sup>nd</sup></sup> category.

The requirement to “contrast with the background” is a frequent one in the TSI. In general, visual contrast is a matter of having different light reflectance values (LRV) or having different luminance.

When it is required in the TSI to provide a contrast, this can be achieved by applying the standards listed in chapter 5, index A.

~~The methodology provided in the Recommendation For Use 053 issued by NB-Rail (see point 1.3) can also be used, and can be adapted by using reflectance from RAL directly.~~

Other standards can be used according to the rules described in ~~point~~<sup>chapter</sup> [2.3.1](#).

For assessing this parameter, it is sufficient to provide the technical data sheet of the product(s). The assessment should not consider factors such as snow, ice, rain and different lighting conditions (shadows).

In some precise cases, it is required in the TSI to provide a self-contrasted marking on elements such as boarding aids: being obstacles to other passengers when they are in use, the boarding aids are frequently displaced and therefore they cannot be assessed by the “contrast with the background”. A methodology for providing self-contrasted marking is described in the standards listed in chapter 5, index B.

### **[3.2.3](#) Tactile**

The requirement to “tactile” is a frequent one in the TSI. Tactile is a parameter of the ~~second~~<sup>2<sup>nd</sup></sup> category.

When it is required in the TSI to provide tactile signs and tactile controls, this can be achieved by applying the standards listed in chapter 5, index C.

When it is required in the TSI to provide tactile walking surface indicators, this can be achieved by applying the standards listed in chapter 5, index D.

Other standards can be used according to the rules described in ~~point~~<sup>chapter</sup> [2.3.1](#).

### 3.4.2.4 Readability of a typeface

The readability of a typeface is related to the ease of distinguishing one letter from another. Readability is a parameter of the ~~second~~ 2<sup>nd</sup> category.

When it is required in the TSI to ensure the readability of a typeface, this can be achieved by applying the standards listed in chapter 5, index E.

Other standards can be used according to the rules described in ~~point~~ chapter 2.3.1.

Standards generally recommend the use of sans serif typefaces (“Serifs” are the small finishing strokes on the end of a character; “Sans serif” fonts do not have these small finishing strokes). However, some typefaces use horizontal lines to achieve a better readability, they should not be mistaken as serifs.

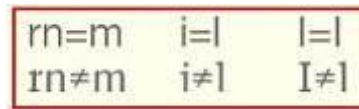


Figure 1: Example showing horizontal lines (second line) to achieve better readability, which are no serifs.

### 3.5.2.5 Palm operation

When it is required in the TSI to provide a device that can be palm operated, this can be achieved by applying the standards listed in chapter 5, index F.

### 3.6.2.6 Slip resistance of Floor surfaces

Slip resistance is a parameter of the 2<sup>nd</sup> category.

The slip resistance characteristics of infrastructure floor coverings [and rolling stock steps for access and egress](#) can be assessed according to the standards listed in chapter 5, index G.

For external areas, slip resistance can be assessed according to the standards listed in chapter 5, index H.

Other standards can be used according to the rules described in ~~point~~ chapter 2.3.1.

For assessing this parameter, it is sufficient to provide the technical data sheet of the product(s) used as floor covering(s). When tests are realized, the assessment should not consider factors such as snow, ice, sand, rain and leaves.

The assessment of the slip resistance of boarding aids and rolling stock access steps can be done according to the methodology given in chapter 5, index I.

## 3. GUIDANCE ON THE APPLICATION OF THE PRM TSI

### 3.1 Scope of subsystems and definitions

#### 3.1.1 Points 1: Introduction and 2.1.1: Scope related to infrastructure subsystem

*The objective of this TSI is to enhance the accessibility of rail transport to persons with disabilities and persons with reduced mobility.*

[The TSI considers only aspects relating to accessibility of the railway system for people with reduced mobility. The scope related to infrastructure is limited to ensuring the accessibility of the rail-related elements of stations \(including entrances, platforms, zones of access, service venues, toilets, and information systems\) so that, in combination with the platform height requirement of the TSI INF, a person with reduced mobility can move through the station and into a train.](#)

The specified minimum dimensions in the scope related to infrastructure in this TSI do not consider potential additional widths that may be required for passenger flows and requirements that may be necessary to ensure the safety of passengers at and their evacuation from railway stations.

### ***Scope-related to Infrastructure***

*This TSI applies to all the public areas of stations dedicated to the transport of passengers that are controlled by the **R**ailway **U**ndertaking, **I**nfrastructure **M**anager or **S**tation **M**anager. This includes the provision of information, the purchase of a ticket and its validation if needed, and the possibility to wait for the train.*

That definition of the scope related to infrastructure clarifies that only those parts of the stations dedicated to transport are concerned (and not shopping malls for instance). Also, it clarifies that the TSI applies only to stations and not to (for instance) emergency exits, safe areas in tunnels or level crossings that are not part of the obstacle free route of a station<sup>2</sup>.

Areas that are not controlled by the **R**ailway **U**ndertaking, **I**nfrastructure **M**anager or **S**tation **M**anager (either directly or through subcontractors) are out of scope; this can be the case, for instance, of car parks. In these cases, the cooperation between local actors would be necessary but cannot be required by the TSI.

### 3.1.2 Point 2.1.2: Scope related to rolling stock subsystem

*This TSI applies to rolling stock which is in the scope of the Annex to Regulation (EU) No 1302/2014 (LOC&PAS TSI) and which is intended to carry passengers.*

*This TSI does not apply to rolling stock intended for other purposes than the carriage of persons. Persons accompanying a freight train or riding on other rail vehicles than those intended for passengers shall be subject to conditions set up by the railway undertaking and published on its website.*

The UTP PRM is equivalent to the PRM TSI. Vehicle related requirements in the UTP PRM apply to passenger vehicles intended for use in international traffic that are in the scope of the UTP LOC&PAS. These vehicles should also comply with the UTP LOC&PAS, UTP NOI and UTP Marking.

Infrastructure requirements, which are all related to stations and platforms on international lines, are not mandatory. .

This TSI also does not apply to rolling stock intended as being operated only in test trains and military trains because the essential requirement 1.6.1 of Directive (EU) 2016/797 already excludes such non-public trains from the scope, as it says:

“The ‘infrastructure’ and ‘rolling stock’ subsystems must be accessible to persons with disabilities and persons with reduced mobility (...). This shall include the design, construction, renewal, upgrade, maintenance and operation of the relevant parts of the subsystems to which the public has access.”

## **2.2.— Definitions**

### **2.2.1. Definition of PRMs**

<sup>2</sup> Level crossings that are not part of a station can be used as part of an obstacle-free route if this is deemed appropriate (see explanation on point 4.2.1.15). In such case, they shall comply with the applicable requirements of the TSI.

### 3.1.3 Point 2.2: Definition of “person with disabilities and person with reduced mobility”

*“Person with disabilities and person with reduced mobility” means any person who has a permanent or temporary physical, mental, intellectual or sensory impairment which, in interaction with various barriers, may hinder their full and effective use of transport on an equal basis with other passengers or whose mobility when using transport is reduced due to age.*

*The transport of oversized items (for example: bicycles and bulky luggage) is not within the scope of this TSI.*

The definition above is derived from the [Article 1](#) of the United Nations Convention on the Rights of Persons with Disabilities. It does not specifically include people with children, people with bulky luggage, and foreign people with lack of knowledge of the local language. It does not include automatically elderly people and pregnant women.

Concerning those last two categories, they do not systematically lead to reduced mobility, but obviously old age can decrease the speed and ability with which passengers can move within the station or rolling stock environment. Therefore, elder passengers can be considered as persons with reduced mobility when compared with the average passenger. Similarly, pregnancy is not systematically a cause of reduced mobility. However, when a pregnant passenger’s mobility is affected (for example preventing her from moving easily and quickly), then she may be considered a person with reduced mobility.

Consequently, the number of priority seats has not been affected by the change of definition. Also, the pictograms used to indicate priority seats have not been modified either: the symbols representing a pregnant woman and elder person are worldwide recognized.

#### 2.2.2. Other definitions

### 3.6.13.1.4 Point 2.3: Other definitions

#### Level access

*A level access is an access from a platform to the doorway of a rolling stock for which it can be demonstrated that:*

- *The gap between the door sill of that doorway (or of the extended bridging plate of that doorway) and the platform does not exceed 75 mm measured horizontally and 50 mm measured vertically and*
- *The rolling stock has no internal step between the door sill and the vestibule.*

For this demonstration the gap should be calculated according to the requirements in ~~TSI-PRM~~ points 4.2.2.11.1 (1) and (2) [of the PRM TSI](#) (with  $\delta_h$  = horizontal gap and  $\delta_v$  = vertical gap), and the [explanation on point 4.2.2.11.1](#) ~~2.5.10 of the present in this Application Guide~~, considering a track radius 300 m and straight level track.

### 3.73.2 Characterisation of the Infrastructure subsystems

Application of the UTP PRM is not mandatory for infrastructure. If the UTP PRM is used for the design and construction of infrastructure, it is also recommended to take into account the guidance provided in this section [3.2.4](#).



### ~~3.7.13.2.1~~ Point 4.2.1.1: Parking facilities for persons with disabilities and persons with reduced mobility ~~PRM (point 4.2.1.1)~~

*(1) Where a station specific parking area exists, there shall be sufficient and adapted parking spaces reserved for persons with disabilities and persons with reduced mobility ~~PRM~~ eligible to utilise them at the nearest practicable position, within the parking area, to an accessible entrance.*

The quantity and characteristics of parking places are parameters of the 2<sup>nd</sup> category.

Acceptable technical means to satisfy the requirement are described in the standards listed in chapter 5, index J.

Other standards can be used according to the rules described in chapter 2.3.1.

### ~~3.7.23.2.2~~ Point 4.2.1.2: Obstacle-free route ~~(point 4.2.1.2)~~

*(1) Obstacle free routes shall be provided that interconnect the following public areas of the infrastructure if provided:*

– (...)

The requirement expressed in this sentence is that all routes that interconnect the public areas of a station, within the scope of the TSI, are required to be obstacle-free routes.

This does not mean that all paths that constitute a route shall be equally accessible by all passengers: the definition provided in point 2.3 of the TSI clarifies: "the route can be divided to better meet the needs of all persons with disabilities and reduced mobility. The combination of all the parts of the obstacle free route constitutes the route accessible for all persons with disabilities and reduced mobility".

For example, an obstacle-free route can be the combination of a step-free part, a second part having a tactile path and further parts; the latter are not required to be step-free or equipped with guiding tactile walking surface indicators (TWSI) and they may have stairs provided that these stairs are compliant to the TSI requirements (contrast, warning TWSI, double handrail). It is the combination of all the parts of the obstacle free route that enables the interconnection of the public areas of a station to all persons with disabilities and person with reduced mobility.

The reader may refer to the Technical Opinion ERA/OPI/2014-4<sup>3</sup>, for further information. As indicated in the Opinion, it can be reminded that the chapter 4 of the TSI describes the target system. And that for existing subsystems, the transition is decided according to the stipulations of the chapter 7 of the TSI, that gives flexibility regarding the progressive elimination of obstacles so as to reach the target system.

~~*(1) Obstacle free routes shall be provided that interconnect the following public areas of the infrastructure if provided:*~~

~~– (...)~~

~~– waiting areas~~

~~– (...)~~

A waiting area can be defined as a place to wait for the departure of the train having all the following characteristics:

- Seats are available
- Information about the departures of the trains is available
- People are protected against weather influences (i.e. rain, sun, wind)-

<sup>3</sup> ERA-OPI-2014-4 - Staircases requirements in the PRM TSI | European Union Agency for Railways (europa.eu): Available on ERA Website: <https://www.era.europa.eu/library/documents-regulations/opinions-and-technical-advice>.



The TSI differentiates between “waiting areas” and “platform where passengers are allowed to wait for trains” (see [point 4.2.1.7 \(3\)](#)). [For instance, underground platforms are not in general designated waiting areas only because they are protected against weather influences.](#)

The term “shelter” is also mentioned in the TSI (see 6.2.4). A shelter is a structure with a roof for weather protection but not necessarily walls.” A simple shelter on a platform is not to be understood as a waiting area unless it has all above characteristics.

- [\(…\)](#)
- [platforms](#)

[Platforms are obstacle free routes as long as there are elements such as a waiting area, visual information, boarding aid, etc. on the platform. When there is no more such elements on the platform, then the only applicable requirements are the ones of point 4.2.1.12.](#)

*(3) Obstacle-free route floor surfaces and ground surfaces shall have low reflecting properties.*

The reflectance of the floor surface and/or the ground surface is a parameter of the 2<sup>nd</sup> category.

Acceptable technical means to satisfy the requirement for paints and varnishes are described in the standards listed in chapter 5, index K. For any other ground material and/or surface materials an assessment is not necessary.

Other standards can be used according to the rules described in [chapter](#)~~point~~ 2.3.1.

### ~~3.7.33.2.3~~ [Point 4.2.1.2.2](#): Vertical circulation ~~(point 4.2.1.2.2)~~

~~(2) Staircases on the obstacle-free routes shall have a minimum width of 160cm measured between the handrails. As a minimum the first and last steps shall be indicated by a contrasting band and as a minimum tactile warning surface indicators shall be installed before the first descending step.~~

[\(2a\) As a minimum, the first and last steps of a flight of stairs shall be indicated by a contrasting band. This requirement shall apply from a single step.](#)

[\(2b\) As a minimum, tactile warning surface indicators shall be installed before the first descending step of staircases of three steps or more.](#)

The characteristics of the contrasting band and tactile warning surface indicator are parameters of the 2<sup>nd</sup> category. For contrast and tactile characteristics, refer to [chapters](#)~~points~~ 2.3.2 and 2.3.3.

*(3) Ramps shall be installed for [for persons with disabilities and persons with reduced mobility](#) ~~PRM~~ unable to use stairs where lifts are not provided. They shall have a moderate gradient. A steep gradient is allowed for ramps on short distances only.*

The characteristics of ramps are parameters of the 2<sup>nd</sup> category.

Acceptable technical means to satisfy the requirement are described in the standards listed in chapter 5, index L.

Other standards can be used according to the rules described in point 2.3.1.

The following picture gives a conversion of the value of ramps. It also provides interesting representations:

- On the left, representation of the height:length ratio, showing the length of ramps for overcoming the same vertical difference
- On the right, representation of the angular value, showing the vertical distance overcame by ramps of the same length but of different angles.

Length to height ratio Representation	Value	Ramp Value	Ramp angular value
	1:25	4,0%    40‰	2,3°
	1:20	5,0%    50‰	2,9°
	1:18	5,6%    56‰	3,2°
	1:15	6,7%    67‰	3,8°
	1:12	8,3%    83‰	4,8°
	1:10	10,0%    100‰	5,7°
	1:8	12,5%    125‰	7,1°
	1:6	16,7%    167‰	9,5°

Figure 2: [Conversion table and visual representation of ramps](#)

*(3a) When they are used as a complement to stairs, ramps may have a width of 120 cm measured at floor surface.*

Ramps are considered as used as a complement to stairs when they are placed in the vicinity of a staircase and serve as the step free alternative to that staircase.

When reducing the ramp width to 120 cm, it is necessary to ensure that, from each end, the ramp is fully visible until the other end. This is necessary to avoid a user of the ramp finding herself or himself face to face with another user coming in the opposite direction.

The width of 120 cm measured at floor surface is considered sufficient to ensure a width of 100 cm between handrails as recommended in ISO 21542:2021.

*(4) Stairs of three steps or more and ramps shall be provided with handrails on both sides and at two levels.*

The height of handrails is a parameter of the 2<sup>nd</sup> category.

Acceptable technical means to satisfy the requirement are described in the standards listed in chapter 5, index L1.

Other standards can be used according to the rules described in chapter 2.1.

### [3.7.43.2.4](#)    [Point 4.2.1.2.3:](#) Route identification ~~(point 4.2.1.2.3)~~

*(2) Information on the obstacle-free route shall be given to visually impaired people by [a walking surface that has](#) tactile and contrasting ~~walking surface~~ indicators as a minimum. This ~~point paragraph~~ does not apply to obstacle free routes to and from car parks.*

Tactile walking surface indicators can be omitted where there are built or natural features that can be used for guidance; e.g. walls, kerbs and changes in texture such as between pavement and grass. These built or natural features need to provide both tactual and visual guidance.

The characteristics of tactile and contrasting surface indicators are parameters of the 2<sup>nd</sup> category. See ~~points~~ [chapters 2.3-2](#) and [2.3-3](#) of this [application](#) guide. [Acceptable technical means to satisfy the requirement are described in the standards listed in chapter 5, index D.](#)

Audible and tactile signs, talking signs or Braille maps may be used as complementary means to provide information.

[Tactile walking surface indicators as part of the obstacle free route only needs to be built to interconnect public areas but not to guide inside an area, e.g. a toilet.](#)

*(4) If there are handrails or walls within reach along the obstacle-free route to the platform, they shall have brief information (for example platform-number or direction-information). The information shall be in Braille or prismatic-letters or numbers. The information shall be located on the handrail, or on the wall at a height between 145 cm and 165 cm.*

In places where there are both a handrail and a wall, only one of them needs to have brief information. The specified height only applies for information located on the wall. On double handrails the upper one should be the one with the information. The requirement for the height of the information between 145 cm and 165 cm only applies to the wall not to the upper handrail.

### ~~3.7.53.2.5~~ Point 4.2.1.3: Doors and entrances ~~(point 4.2.1.3)~~

*(2) Doors shall have a minimum clear useable width of 90 cm and shall be operable by a persons with disabilities and persons with reduced mobility ~~PRM~~.*

The characteristics of doors operating devices are parameters of the 2<sup>nd</sup> category.

Applicable technical means to satisfy the requirement are described in the standards listed in chapter 5, index M.

Other standards can be used according to the rules described in ~~point~~ chapter 2.3.1.

### ~~3.7.63.2.6~~ Point 4.2.1.5: Highlighting of transparent obstacles ~~(point 4.2.1.5)~~

*(1) Transparent obstacles on or along the routes used by passengers, consisting of glass doors or transparent walls, shall be marked. These markings shall highlight the transparent obstacles. They are not required if passengers are protected from impact by other means – for example, by handrails or continuous benches.*

The characteristics of markings on transparent obstacles are parameters of the 2<sup>nd</sup> category.

Acceptable technical means to satisfy the requirement are described in the standards listed in chapter 5, index N.

Other standards can be used according to the rules described in ~~point~~ 2.3.1.

This following ~~partly~~ glazed surfaces need ~~not~~ to have markings:

- ~~third parties~~ Retail units in the area controlled by the ~~S~~ tation ~~M~~ anager (e.g. shop windows used to present the products that are sold inside)
- Lift doors with metal frames

Partial glass walls and balustrades shall only be assessed when one contrasting band or more is possible to apply, because of the height of the object (see Figure 3 and Figure 4 ~~examples~~ below).

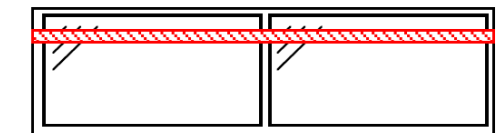


Figure 3: Example of glass balustrades

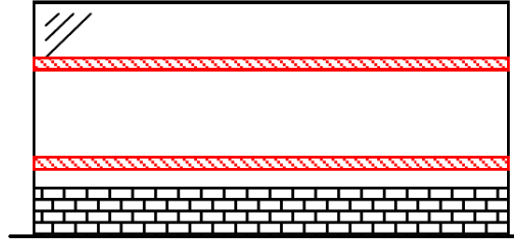


Figure 4: [Example](#) of partial glass wall

For transparent obstacles lower than 950 mm there is no requirement.

The handrail and frame of glass balustrades can be considered to fulfil the requirements for these markings, when they are broad enough (100 mm high, contrast with the background against which they are viewed).

### [3.7.73.2.7](#) [Point 4.2.1.6](#): Toilets and baby nappy changing facilities ~~(point 4.2.1.6)~~

*(1) If toilets are provided at a station, then a minimum of one unisex cubicle shall be wheelchair accessible.*

The characteristics of a wheelchair accessible toilet are parameters of the 2<sup>nd</sup> category.

Acceptable technical means to satisfy the requirement are described in the standards listed in chapter 5, index O.

Other standards can be used according to the rules described in ~~point~~ [chapter 2.3.1](#).

~~*(2) If toilets are provided at a station, baby nappy changing facilities shall be provided which are accessible to both men and women.*~~

~~Baby nappy changing facilities have to be available to wheelchair users (both men and women)~~

### [3.7.83.2.8](#) [Point 4.2.1.7](#): Furniture and free-standing devices ~~(point 4.2.1.7)~~

*(1) All items of furniture and free-standing devices at stations shall contrast with their background, and have rounded edges.*

Free-standing devices are those elements, either fixed or removable, that are not part of the structure of the building and that can constitute obstacles: lighting masts, information pillars or columns, bins etc. Elements that are not included in this definition are signalling equipment, lifts, external staircase, walls, any free-hanging devices above 210 cm above the walking floor and items that have a dimension greater than 200 cm perpendicular to the walking direction (e.g. fence, waiting shelter etc). The background in the context of this point is to be understood as the floor surrounding the furniture and/or the free-standing device and any adjacent wall or structure when existing.

Contrast with the background is a parameter of the 2<sup>nd</sup> category. See ~~point~~ [chapter 2.3.2](#) of this application guide.

A rounded edge is the opposite of a sharp edge that is defined in [the explanation on point 4.2.2.1 of the TSI point 2.5.1](#).

*(2) Within the station confines, furniture and free-standing devices (including cantilevered and suspended items) shall be positioned where they do not obstruct blind or visually impaired people, or they shall be detectable by a person using a long cane.*

This paragraph combines free standing devices (resting on the floor) and cantilevered/suspended items (generally fixed on a wall or ceiling) because they all represent obstacles. Their proper positioning is important, away from the obstacle-free routes.

In addition, when cantilevered and suspended items are positioned too low, they can constitute an undetectable obstacle for visually impaired persons. It is the same for elements such as inclined masts or pillars or stairs that can be a hazard. For instance in the case of stairs, when the space underneath the stairs is open, there is a need for a guard to be provided until the clear height under the stairs is sufficient.

In general, for every cantilevered, suspended or inclined item the need for a guard at floor level should be considered.

The minimum height and other characteristics of the guarding are parameters of the 2<sup>nd</sup> category.

Applicable technical means to satisfy the requirement are described in the standards listed in chapter 5, index P.

Other standards can be used according to the rules described in [point-chapter 2.3-1](#).

Alternatively, cantilevered items fitted below a height of 2100 mm, which protrude by more than 150 mm, are indicated by an obstacle, at a maximum height of 300 mm that can be detected by a blind person using a stick.

### [3.7.93.2.9](#) [Point 4.2.1.8:](#) Ticketing, Information desks and Customer Assistance point ~~(point 4.2.1.8)~~

*(1) Where manual ticket sales counters, information desks and customer assistance points are provided ~~along the obstacle free route~~, a minimum of one desk shall be accessible to a wheelchair user and to people of small stature and a minimum of one desk shall be fitted with an induction loop system for hearing assistance.*

The characteristics of an accessible desk are parameters of the 2<sup>nd</sup> category.

Acceptable technical means to satisfy the requirement are described in the standards listed in chapter 5, index Q.

Other standards can be used according to the rules described in [point-chapter 2.3-1](#).

*(2) If there is a glass barrier between the passenger and sales person at the ticket counter, this shall either be removable or, if not removable, an intercom system shall be fitted. Any such glass barrier shall consist of clear glass.*

There are many varieties of barriers used, they are not all made of glass. Therefore, ‘glass’ in the context of this parameter is to be understood as transparent material. It can be extended to other materials such as [polymethyl methacrylate, PMMA](#) ~~or~~ polycarbonate, [or any other transparent material](#).

For the assessment of this parameter, “clear” is to be understood as [being transparent and](#) allowing a minimum of 50% light transmission.

If there are holes in the transparent barrier allowing sound to propagate, then an intercom system is not required

*(4) Where ticket vending machines are provided ~~on an obstacle free route~~ at a station, a minimum of one of these machines shall have an interface that is reachable by a wheelchair user and people of small stature. [This requirement applies to each ticket vendor providing vending machines in the station.](#)*

[Accessibility to the ticket vending machines can be fulfilled by alternatively sideward or frontal approach of the wheelchair user. In case of sideward use, no free space under the ticket vending machine is needed.](#)

The ticket vendor providing vending machines is to be understood as the entity having the responsibility to decide which vending machine is to be installed in a station.

The characteristics of accessible ticket vending machines are parameters of the 2<sup>nd</sup> category.

Applicable technical means to satisfy the requirement are described in the standards listed in chapter 5, index R.

Other standards can be used according to the rules described in ~~point~~ [chapter 2.3.1](#).

### ~~3.7.10~~ [3.2.10](#) [Point 4.2.1.9](#): Lighting ~~(point 4.2.1.9)~~

- (1) *The illuminance level of the external areas of the station shall be sufficient to facilitate way finding and to highlight the changes of level, doors and entrances.*
- (2) *The illuminance level along obstacle-free routes shall be adapted to the visual task of the passenger. Particular attention shall be paid to the changes of levels, ticket vending offices and machines, information desks and information displays.*

The illuminance levels in the areas described are parameters of the 2<sup>nd</sup> category.

Applicable technical means to satisfy the requirement are described in the standards listed in chapter 5, index S.

Other standards can be used according to the rules described in [chapter](#) ~~point~~ [2.3.1](#).

Measurement for lighting shall be done along the obstacle free routes and on the platforms as defined by the applicant.

- (4) *Emergency lighting shall provide sufficient visibility for evacuation and for identification of fire-fighting and safety equipment.*

Emergency lighting is a parameter of the 2<sup>nd</sup> category. Defining where emergency lighting applies is not in the scope of the TSI-PRM. Only where emergency lighting is provided the PRM TSI requirement 4.2.1.9 (4) applies.

Applicable technical means to satisfy the requirement are described in the standards listed in chapter 5, index T.

Other standards can be used according to the rules described in ~~point~~ [chapter 2.3.1](#).

### ~~3.7.11~~ [3.2.11](#) [Point 4.2.1.10](#): Visual information: signposting, pictograms, printed or dynamic information ~~(point 4.2.1.10)~~

- (1) *The following information shall be provided:*
  - *Safety Information and Safety Instructions.*
  - *Warning, prohibition and mandatory actions signs.*
  - *Information concerning the departure of trains.*
  - *Identification of station facilities, where provided, and access routes to those facilities.*

Information concerning the departure of trains is the planned departure as a minimum. It is not mandatory to provide the actual time of departure. In stations and on platforms, it is not mandatory to install a dynamic visual information system.

- (2) *The fonts, symbols and pictograms used for visual information shall contrast with their background.*



Contrast with the background is a parameter of the 2<sup>nd</sup> category. See [point-chapter 2.3.2](#) of this application guide.

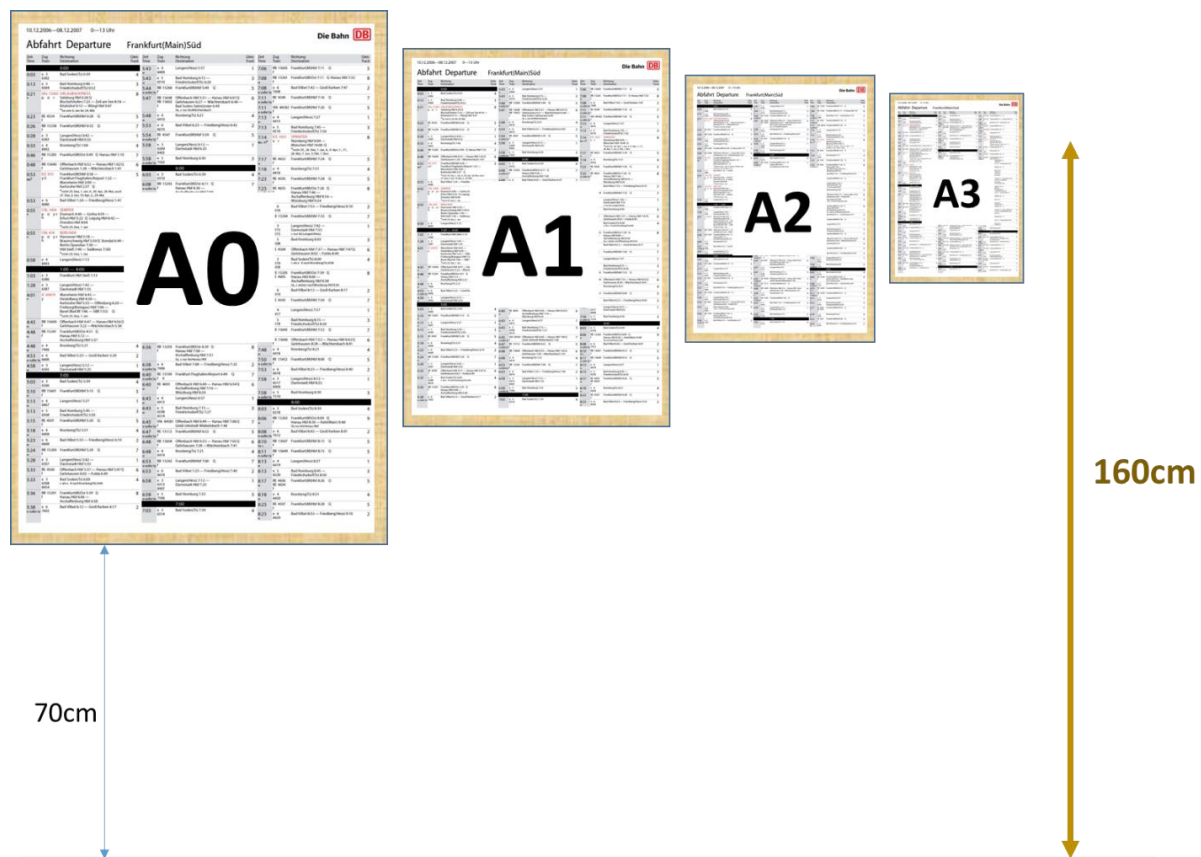
(3) Signposting shall be provided at all points where passengers need to make a route taking decision and at intervals on the route. Signage, symbols and pictograms shall be applied consistently over the whole route.

This requirement expresses the need to provide the appropriate level of information required to make the decision. For example, “To the platforms” in general may be appropriate at the first decision making point when entering the station, rather than specific signs indicating each individual platform.

When a route leading to a specific zone is long, it is recommended to reiterate the signage at regular intervals (approximately every 100 m maximum) so as to keep the passenger confident.

(4) The information concerning the departure of trains (including destination, intermediate stops, platform number and time) shall be available [and suitable for reading from](#) a height of 160 cm ~~maximum~~ at least in one location in the station. ~~This requirement applies to printed and dynamic information whatever is provided.~~

The provision of visual information at a height of 160 cm ~~maximum~~ is intended for people with visual impairment for whom, in case of dynamic information, the formula defining the area of use of displays (point [4.2.1.105.3.1.1 \(3\)](#) of the TSI) is not appropriate for they have vision on a very short distance only. Therefore, they need to be able to get their eyes very close to the message that is displayed. [According to the size of the information concerning the departure of trains \(including destination, intermediate stops, platform number and time\), the height of 160 cm should be such that 20 % to 30 % of the information is above that height, taking care that the lower part of the information should not be located below 70 cm \(see Figure 5 below\).](#)



[Figure 5: Height of information panels \(example\)](#)

It shall exist an appropriate and available visual information facility for those people once in each station. The station manager /infrastructure manager decides whether he provides printed or dynamic

information. It does not need to be dynamic information, even if there is a dynamic information system in the station.

Visually impaired People ~~with a visual impairment~~ should be directed to ~~that~~ places by where they can obtain information accessible to them by an appropriate guiding system.

*(6) All safety, warning, mandatory action and prohibition signs shall include pictograms.*

Pictograms are signage containing only graphical symbols and/or figures within a frame with a particular meaning.

Applicable technical means to satisfy the requirement are described in the standards listed in chapter 5, index U.

Other standards can be used according to the rules described in ~~point~~ chapter 2.3-1.

*(9) The following specific graphic symbols and pictograms shall be fitted with the wheelchair symbol in accordance with ~~a~~Appendix N:*

- Directional information for wheelchair specific routes;*
- Indication of the wheelchair accessible toilets and other amenities if provided;*
- If there is train configuration information on the platform, indication of the wheelchair boarding location.*

*(...)*

When all station facilities can be reached by wheelchair users without making any specific route decision, (i.e. where there are no “wheelchair specific routes”), it is not necessary to provide the wheelchair sign to indicate a direction.

Only the information about the train configuration shall contain an indication about the wheelchair boarding location by using the wheelchair symbol. It is not required to mark the platform surface.

*(...)*

*The symbols are permitted to be combined with other symbols (for example: lift, toilet, etc.).*

“Combined” is to be understood as the possibility to generate a new symbol by combining two or more (e.g. a wheelchair user in a lift). Some examples are depicted in the Figure 6 below:



Figure 6: Example of combination of symbols

*(11) In wheelchair accessible toilets, where hinged handrails are provided, a graphic symbol showing the rail in both the stowed and deployed position shall be provided.*

An example for this sign is shown in the standard EN 16584-2:2017, figure K.8; another example is shown on Figure 7 below.



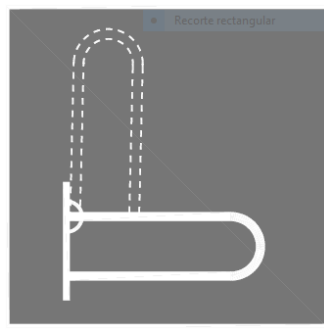


Figure 7: Example of symbol showing the toilet hinged rail in both the stowed and deployed position

*(12) There shall be no more than five pictograms, in addition to a directional arrow, indicating a single direction placed adjacent to each other at a single location.*

It is permitted to show more than one row per location. Each row has a maximum of five pictograms per row. All the rows indicating a single direction need to be included with one directional arrow. Examples are provided in the Figure 8 below.



Figure 8: Example of distribution of pictograms on information panels

*(13) Displays shall be sized to show individual station names (which may be abbreviated) or words of messages. Each station name, or words of messages, shall be displayed for a minimum of 2 seconds.*

Station names can be displayed complete or abbreviated if this is more convenient and if the abbreviation is clear.

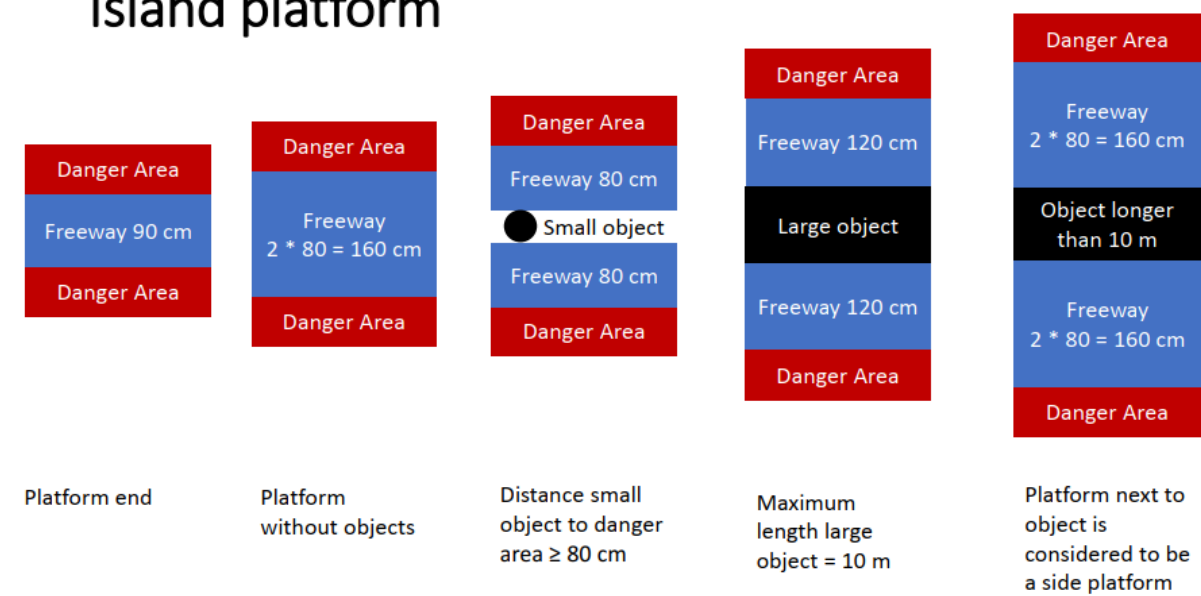
### 3.7.123.2.12 Point 4.2.1.12: Platform width and edge of platform ~~(point 4.2.1.12)~~

*(1) The danger area of a platform commences at the rail side edge of the platform and is defined as the area where passengers are not allowed to stand when trains are passing or arriving.*

The limits of the danger area are defined in ~~N~~ational rules.

A platform is defined as the surface next to a track along which one or more trains is intended to remain stationary in normal operating conditions to allow passengers to board and alight from the train, making appropriate allowance for stopping tolerances. A platform can have tracks on one or both sides. Examples of different platform layouts can be found in Figure 9 below.

## Island platform



## Side platform

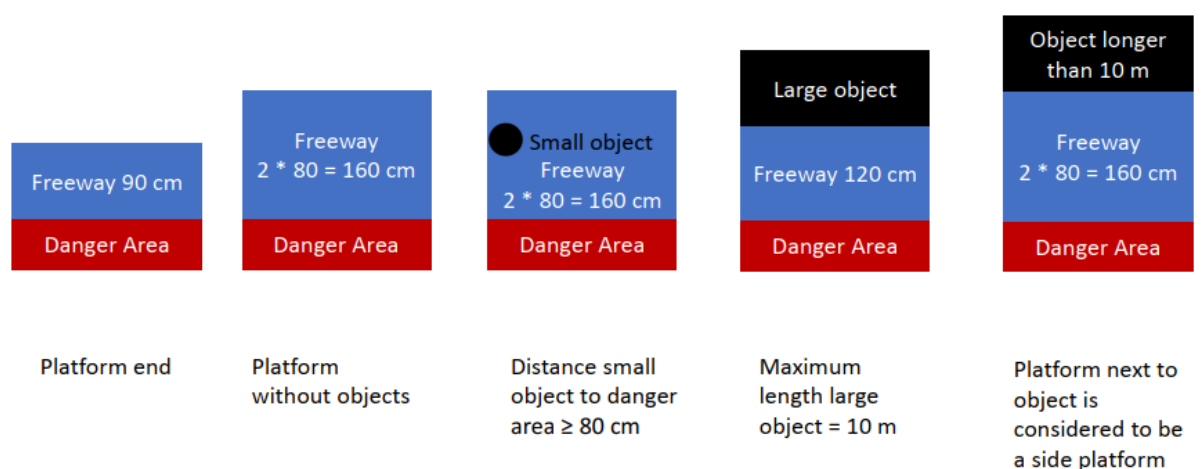


Figure 9. Examples of different platform layouts

Note: in case there is no track along a platform edge, that platform edge is out of the scope of the TSI.

(3) The minimum width of the platform without obstacles shall be the width of the danger area plus the width of two opposing freeways of 80 cm (160 cm). This dimension may taper to 90 cm at the platform ends.

The width requirement is applicable to both a single track platform and an island platform.

(9) The material at the rail side edge of the platform shall contrast with the darkness of the gap.

Applicable technical means to satisfy the requirement are described in the standards listed in chapter 5, index ZA.

### 3.2.13 Point 4.2.1.14: Boarding aids stored on platforms

*(3) A secure storage method shall be provided to ensure that boarding aids, including portable ramps, when stored on a platform, do not cause an obstruction or pose any hazard to passengers.*

It is sufficient for most boarding aids to store them without any securing device on a dedicated space on the platform where they do not obstruct passengers. Because of their weight it is not necessary to secure them.

### ~~3.7.13~~ 3.2.14 Point 4.2.1.15: Passenger track crossing to platforms ~~(point 4.2.1.15)~~

*(1) Level track crossings are permitted to be used as part of a step-free route or of an obstacle-free route.*

Level crossings are not necessarily included in the scope of the TSI: they may be out of the station and controlled by non-railway entities. This can be the case in the countryside where a road crosses the track just before the station. When such level crossings exist, they can be used as part of an obstacle-free route, provided they meet the requirements of the TSI. However, being out of the scope of the TSI, there is no obligation to have them assessed by a notified body.

This is a case where the cooperation between local actors would be necessary but cannot be required by the TSI.

*(2) If level track crossings are used as parts of step free routes in addition to other routes, they shall:*

- (...)*
- be designed so that the smallest wheel of a wheelchair, as defined in appendix M, cannot be trapped within the crossing surface and the rail*
- (...)*

In order to achieve the best possible accessibility level, the size of the gap between the crossing surface and the rail should be as close as possible to the limit for the lower part of the structure gauge stated by point 4.2.3.1(2) of the Annex to Commission Regulation (EU) No 1299/2014 (INF TSI).

COTIF provisions equivalent to INF TSI are set out in UTP INF, where the same point applies.

- (...)*
- where accesses to level crossings are equipped with safety chicanes in order to prevent people from unintended/uncontrolled crossing of the tracks, the minimum width of the walkways in the straight line and in the chicane can be less than 120 cm with a minimum of 90 cm; it shall be sufficient for a wheelchair user to manoeuvre.*

**Figure 10 below** ~~The following sketch~~ shows ~~two~~ 2 acceptable solutions where the manoeuvring space is sufficient for a wheelchair. The top version is adapted to platforms with constructional constraints.

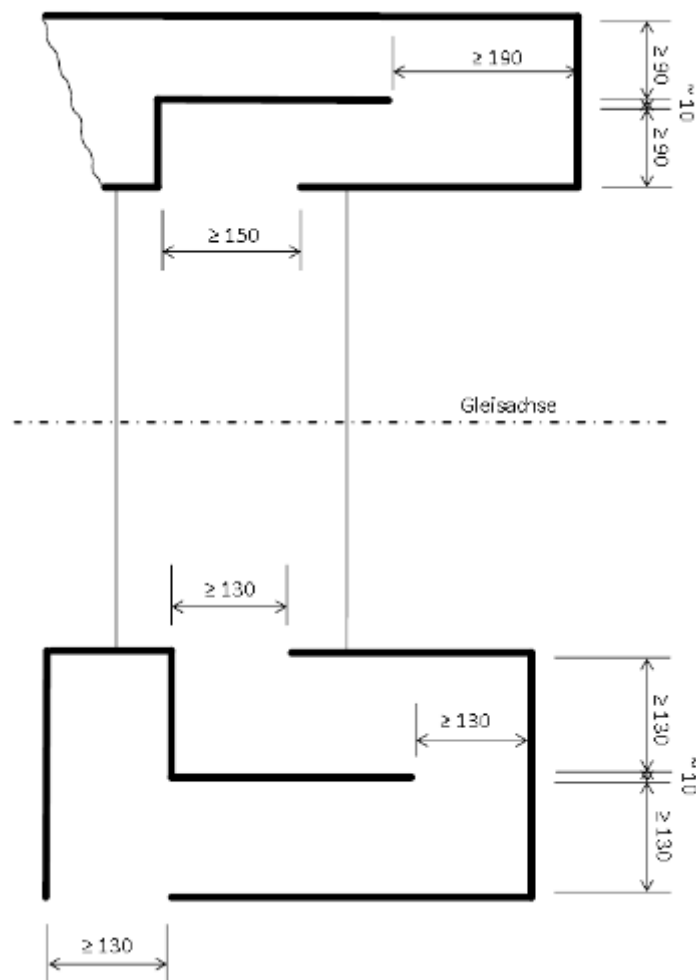


Figure 105: Wwalkway and chicanes for level track crossing

(3) If level track crossings are used as parts of obstacles free routes, unique solution for all passengers, they shall:

— ( )

- be supervised, or, on the basis of national rules, equipment for a safe crossing of blind or visually impaired people shall be provided and/or the level crossing shall be operated for a safe crossing of visually impaired people.

The national rules about the use of level track crossings can be operational or technical; in the second case, they are assessed by a designated body.

### ~~3.7.14 Interoperability constituent: Displays (point 5.3.1.1)~~

~~(1) Displays shall be sized to show individual station names or words of messages. Each station name, or words of messages, shall be displayed for a minimum of 2 seconds.~~

~~Station names can be displayed complete or abbreviated if this is more convenient and if the abbreviation is clear. However, for the assessment of the IC, it is not required to know which station names will be displayed by the device.~~

### 3.7.15 Interoperability Constituent: Platform lifts (point 5.3.1.3)

- ~~(5) At surface level, the lift platform shall have a minimum clear width of 800 mm and a length of 1200 mm. According to appendix M, an additional length of 50 mm shall be available for feet above a height of 100 mm above the lift platform, considering both inboard and outboard orientations of the wheelchair user.~~
- ~~(14) The loading edge barrier (outer barrier) which functions as a loading ramp when the lift is at ground level, shall be sufficient when raised or closed, or a supplementary system shall be provided, to prevent a power wheelchair from riding over or defeating it.~~

The following sketch shows an acceptable mean to comply with the requirements.

Required additional length for feet: 1250 mm that shall be ensured at both platform ends (for inboard and outboard orientation)

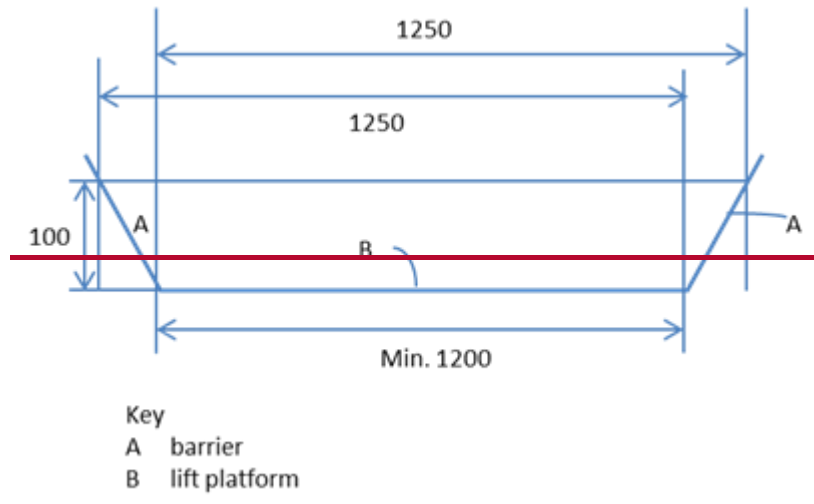


Figure 6: clear length of the lift platform

In order to prevent a power wheelchair from riding over the barrier, a height of 100mm is recommended (such value is prescribed for instance in EN 1756 2:2004+A1:2009: Tail lifts—Platform lifts for mounting on wheeled vehicles—Safety requirements—Part 2: Tail lifts for passengers).

### 3.8.3.3 Characterisation of the Rolling Stock subsystem

#### 3.8.13.3.1 Point 4.2.2.1.1: General Seats (point 4.2.2.1)

- (1) Handholds or vertical handrails or other items that can be used for personal stability, whilst using the aisle, shall be provided on all aisle-side seats ~~seats~~ unless the seat, when in the upright position, is within 200 mm of:
- the back of another seat facing in the opposite direction which is fitted at its aisle side with a handhold or a vertical handrail or other items that can be used for personal stability
  - a handrail or a partition provided at the aisle side of the seat.

When the seats are equipped with handholds (i.e. components that are fixed to the seat at their both ends), those are not required to comply with the handrail requirements that are expressed in point 4.2.2.9 of the TSI.

- (4) The handholds or other items shall not have sharp edges.

A sharp edge is a thin edge capable of cutting or an abrupt end or discontinuity of a surface which has the potential risk to injure a passenger in normal use.

### ~~3.8.23.3.2~~ Point 4.2.2.1.2.1: General ~~Priority seats (point 4.2.2.1.2.1)~~

*(1) Not less than 10 percent of the seats by fixed trainset or individual vehicle, and by class shall be designated as priority seats for the use of persons with disabilities and persons with reduced mobility.*

The number of seats (from which 10% shall be calculated) includes all types of seats except those tip-up seats in the vestibule and regulated wheelchair spaces. Wheelchair spaces, standing supports and all other equipment where the user is not intended to sit down completely, are not considered as seats.

Where 10% of the number of seats does not produce a whole number, the number of priority seats required must be rounded up.

When the rolling stock is equipped with transfer seats, these can be included in the 10% priority seats when they comply with the requirements.

When the rolling stock is equipped with foldable seats and fixed seats, the proportion of priority seats that are foldable should not be greater than the proportion of general seats that are foldable.

*(2) The priority seats and vehicles containing them shall be identified by signs complying with Appendix N. It shall be stated that other passengers shall make such seats available to those who are eligible to use them when required. That identification is not required for units intended to be operated exclusively within a seat reservation system: that shall be reported in the technical documentation requested in point 4.2.12 of the LOC&PAS TSI.*

COTIF provisions equivalent to LOC&PAS are set out in UTP LOC&PAS, where the same point applies.

When every vehicle of a trainset contains priority seats, it is not necessary to identify them outside.

*(3) The priority seats shall be located within the passenger saloon and in close proximity to external doors. In double deck vehicles or trainsets, priority seats can be present on both decks.*

It is not required here that all seats located near the access doors are priority seats. It is not required either that all priority seats are located immediately near access doors.

For the assessment of this parameter at design stage, ~~N~~otified ~~B~~odies are invited to verify only that priority seats are identified as such in the general layout of the vehicle being assessed.

Acceptable technical means to satisfy the requirement are described in the standards listed in chapter 5, index W.

*(4) The level of equipment fitted to the priority seats shall, as a minimum, be the same as that fitted to general seats of the same type.*

*(5) When seats of a certain type are fitted with armrests, priority seats of the same type shall be fitted with movable armrests. ~~...~~*

“Type” in this context is understood as, for example, first class or second class seat, in row or face to face, etc. ~~...~~

For instance, when second class seats in row are fitted with a tray and a magazine holder, then second class priority seats in row shall also be fitted with a tray and a magazine holder.

*(6) Priority seats shall not be tip-up seats.*

A tip-up seat is a seat that moves up into a vertical position when nobody is sitting in it.

### 3.8.33.3.3 Point 4.2.2.2: Wheelchair spaces ~~(point 4.2.2.2)~~

(1) According to the length of the unit, excluding the locomotive or power head, there shall be in that unit not less than the number of accessible wheelchair spaces shown in the following table:

*Table 5*  
*Minimum number of wheelchair spaces per unit length*

Unit length	Number of wheelchair spaces by unit
Less than 30 m	1 wheelchair space
30 to 205 metres	2 wheelchair spaces
More than 205 to 300 metres	3 wheelchair spaces
More than 300 metres	4 wheelchair spaces

*Table 5: minimum number of wheelchair spaces per unit length*

A driver's cabin can be considered as a powerhead in the context of this requirement.

“Unit” in this context is understood as a railcar or trainset or several of them operated as a train, or rake of passenger coaches in predefined formation. In case a unit is a combination of sleeping coaches and seating coaches, the requirements in points 4.2.2.2 (1) and 4.2.2.10 (2) aren't cumulative. In that case, it is the total number of wheelchair spaces and wheelchair sleeping accommodations that shall comply with table 5.

-Units for general operation which are supplied as individual vehicles do not have to fulfil this requirement according to ~~the chapter 6~~ point 6.2.7 of TSI-PRM.

Therefore, when assessing such units intended to be used in general operation (i.e assessment of passenger coaches), it is not necessary that wheelchair spaces are provided in every coach.

As specified in point 6.2.7 of the TSI, it is the responsibility of the railway undertaking to make sure, when forming the train, that the requirements of the TSI are fulfilled. Therefore, the requirements above need to be satisfied at operational level.

*(6) The back of the wheelchair space shall be a structure or other acceptable fitting of at least 700mm wide. The height of the structure, or fitting, shall be capable of preventing a wheelchair that has been positioned with its back against the structure or fitting, from tipping over backwards.*

In some countries, a typical wheelchair space would include a backrest in addition to this mandatory structure. The backrest is higher and narrower than the structure. This arrangement is not prohibited, provided that a structure below the backrest complies with the above requirement.

Applicable technical means to satisfy the requirement are described in the standards listed in chapter 5, index X.

*(7) Tip-up seats may be installed in the wheelchair space but, when in the stowed position, shall not encroach on the dimensional requirements of the wheelchair space.*

Similarly, tip-up seats can be installed along the corridors leading to the areas accessible to wheelchair users. When in the stowed position, shall not encroach on the dimensional requirements of the corridor that are expressed in the point 4.2.2.6 of the TSI.

*(10) On trains with a design speed higher than 250 km/h excepting double deck trains, it shall be possible for a wheelchair user occupying a wheelchair space to transfer onto a passenger seat that shall be equipped with a movable armrest. Such transfer is made by the wheelchair user in*



*autonomy. In that case, it is allowed that the companion seat is shifted to another row. This requirement is applicable up to the number of wheelchair spaces per unit specified in table 5.*

As indicated at the beginning of the paragraph, this parameter only applies to single deck trains with a design speed higher than 250 km/h. It affects the layout of the wheelchair space. Contrarily to the access to the toilet, here it is not mandatory to enable both a frontal and a lateral approach to the transfer seats. One of both is sufficient. No staff assistance is required to help the transfer, it is done either autonomously or with a personal assistant help.

After the transfer, the wheelchair can remain nearby the seat when it does not create an obstacle to other passengers. There is no storage place or fixation device required. It is understood that, from the transfer seat, it may not be possible to access the call for aid device.

Transfer seats can be foldable seats (with two stable positions - unfolded or folded). They cannot be tip-up seats.

*(13) The call for aid device shall not be placed within a narrow recess which prevents immediate intentional palm operation but can be protected from unintentional use.*

*(14) The interface of the call for aid device shall be as set out in point 5.3.2.6.*

Point 5.3.2.6 defines the requirements for the interoperability constituent “call for aid device”. In particular, the device shall include a symbol, representing a bell or a telephone. ~~“be indicated by a sign having a green or yellow background (according to the specification referenced in Appendix A, index 10 of the TSI) and a white symbol, representing a bell or a telephone;”~~ This symbol is specific to the call for aid device present in the wheelchair space, universal toilet and wheelchair accessible sleeping compartments. It is not required to be placed nearby other communication devices that may exist in the train.

“Immediate intentional palm operation” is to be understood as a palm operation, which is done by a definite ~~unique~~ action from the user. “Immediate” here has the meaning of “with a simple ~~out previous~~ operation including the movement of a cover fitted for protection from unintentional use, this should be possible with the same hand being used to activate the device (this can be assessed according EN 16585-3:2016, Clause 6)” and not a meaning of “within a time of x seconds”.

### 3.8.43.3.4 Point 4.2.2.3.2: Exterior doors ~~(point 4.2.2.3.2)~~

~~(5+)~~ *The doors to be used for wheelchair access shall be clearly labelled with a sign in accordance with A ~~appendix~~ N.*

The sign required is the International wheelchair sign in accordance with the specifications referenced in Appendix A, index 12 of the TSI. It needs only to be placed on the wheelchair access door or very close to it. It is not necessary to repeat the sign on each coach with a directional arrow to indicate in which direction the wheelchair accessible door is.

(8) The door operating signals are the following:

— (...)

The audible and visible door closing signal can be omitted when a door is closing for reasons other than departure if alternative means are in place to mitigate the risk of injury to the passengers and the train crew. The provision of audible and visible door closing signals or of the alternative means shall be equally accepted in all Member States.

The alternative means that can be put in place to ensure the absence of risk of injuries to the passengers and train crew are, for instance and in accordance with the standard listed in chapter 5, index Z:

— Light curtain, i.e. a series of sensors covering the complete vertical plane between the open door leaves that stop the door movement and initiate a re-opening upon the detection of any object



- Reduced door operating speed with door sensitive edges, i.e. sensors placed in the door edges that stop the door movement and initiate a re-opening when they touch an object.

### ~~3.8.53.3.5~~ Point 4.2.2.3.3: Interior doors ~~(point 4.2.2.3.3)~~

*(6) If more than 75 % of a door's surface is made of a transparent material, it shall be clearly marked with visual indicators.*

Several possibilities exist for a clear marking of such transparent doors. Examples can be found in the standards listed in chapter 5, index N.

For this rolling stock parameter, the principles explained in ~~point~~ chapter 2.3.1 are applicable, and therefore technical solutions equivalent to the standards listed above are acceptable too.

### ~~3.8.63.3.6~~ Point 4.2.2.5: Toilets ~~(point 4.2.2.5)~~

*(1) When toilets are fitted in a train, a universal toilet shall be provided accessible from the wheelchair space.*

*(...)*

*(4) When toilets are fitted in a train a baby nappy changing facility shall be provided.*

When assessing units intended to be used in general operation (i.e assessment of passenger coaches), it is not necessary that universal toilets or baby nappy changing facilities are provided in every coach equipped with standard toilets.

As specified in point 6.2.7 of the TSI, it is the responsibility of the railway undertaking to make sure, when forming the train, that the requirements of the TSI are fulfilled. Therefore, the requirements above need to be satisfied at operational level.

### ~~3.8.73.3.7~~ Clearways (point 4.2.2.6)

*(1) From the vehicle entrance, the following section of the clearway shall be in accordance with the specification referenced in Appendix A, index [17] ~~as follows~~:*

- *through the vehicles ~~according to figure J1 of Appendix J,~~*
- *between connecting vehicles of a single trainset, ~~according to figure J2 of Appendix J,~~*
- *to and from wheelchair accessible doors, wheelchair spaces and wheelchair accessible areas including sleeping accommodation and universal toilets if provided ~~according to figure J3 of Appendix J.~~*

Wheelchair users may access several spaces within the train: dedicated vestibule and dedicated spaces as a minimum, toilets when they are present, sleeping accommodation, etc. The train layout shall be sufficient to avoid a wheelchair user to find herself or himself in a cul-de-sac.

*(2) The minimum height requirement does not need to be verified in:*

- *all areas of double-deck vehicles,*
- *gangways and door areas of single deck vehicles,*

*In those areas, reduced headroom is accepted as a consequence of structural constraints (gauge, physical space).*

The figures provided in Appendix A Index 16 of the TSI ~~J~~ are applicable to the passenger seating and standing areas of single deck carriages. It is accepted that, in some particular locations of the single deck

coaches, the minimum height specified will not be met: gangways and door areas are such locations. The minimum height need not be met either in double deck carriages.

There, the TSI does not specify any minimum and nNotified bBodies are asked not to check the height, but only the width of the clearway.

*(3) A turning space, with a minimum diameter of 1 500 mm, shall be provided adjacent to the wheelchair space and in other locations where wheelchairs are supposed to turn 180°. The wheelchair space may be part of the turning circle.*

This point does not apply to the toilet modules that have their own requirements. It applies only to corridors within the train.

Note: even for a 180° turn, a 360° turning space with a diameter of 1500 mm is necessary.

*(4) If a change in direction is required for a wheelchair user, the clearway width of both corridors or corridor and door shall be in accordance with the specification referenced in Appendix A, index [17].*

The specification referenced in Appendix A, index 16 only covers the case of perpendicular changes of direction for some rounded values of clearway widths; there may be cases where the values are different and/or the change of direction is not perpendicular.

These cases are allowed provided that the sum of the widths remains sufficient, for instance as per the table below, and that the change of direction is of less than 90°.

<u>Corridor width (mm)</u>	<u>1200</u>	<u>1200-n</u>	<u>1100</u>	<u>1100-n</u>	<u>1000</u>	<u>1000-n</u>	<u>900</u>	<u>900-n/2</u>	<u>850</u>	<u>850-n/2</u>	<u>800</u>
<u>Door usable width (mm)</u>	<u>800</u>	<u>800+n/2</u>	<u>850</u>	<u>850+n/2</u>	<u>900</u>	<u>900+n</u>	<u>1000</u>	<u>1000+n</u>	<u>1100</u>	<u>1100+n</u>	<u>1200</u>

Table 4: corridor width and corresponding door usable width (with 0<n<100)

### 3.8.83.3.8 Point 4.2.2.7.2: Signage, pictograms and tactile information ~~(point 4.2.2.7.2)~~

*(3) The following specific pictograms shall be fitted with the wheelchair symbol in accordance with Appendix N:*

- *Directional information for wheelchair accessible amenities*
- *Indication of the wheelchair accessible door location outside the train*
- *Indication of the wheelchair space inside the train*
- *Indication of the universal toilets*

*The symbols can be combined with other symbols (for example: carriage number, toilet, etc.).*

The sign required is the International wheelchair sign in accordance with the specifications referenced in Appendix A, index 12 of the TSI.

### 3.3.9 Point 4.2.2.7.3: Dynamic visual information

*(10) Each station name (which may be abbreviated), or words of messages, shall be displayed for a minimum of 2 seconds.*

Station names can be displayed complete or abbreviated if this is more convenient and if the abbreviation is clear.

### 3.8.93.3.10 Point 4.2.2.9: Handrails ~~(point 4.2.2.9)~~

(5) The handrails referred to in point (4) shall be:

- vertical handrails that shall extend from 700 mm to 1 200 mm above the threshold of the first step for all external doorways.
- additional handrails at a height of between 800 mm and 900 mm above the first useable step and parallel with the line of the step nosing for doorways with more than two entrance steps.

The reference point for any measurement relative to handrails is the centre of that handrail.

### 3.8.103.3.11 Point 4.2.2.11.1: General requirements ~~Step position for vehicle access and egress (point 4.2.2.11.1)~~

(1) It shall be demonstrated that the point situated in the central position on the nose of the access step of each passenger access door on both sides of a vehicle in working order with new wheels standing centrally on the rails, shall be located inside the surface identified as “step location” on the figure 1 below.

(...)

The access step in this clause means the first step of a vehicle that a passenger uses when boarding or alighting a train. This will normally be the step that is closest to the platform edge. It may be a fixed or a moveable step. Examples for a nose of the access step are defined in the standards listed in chapter 5, index ZB.

Steps may, when extended, be situated also above the platform.

(2) The values of  $bq_0$ ,  $\delta_h$ ,  $\delta_{v+}$  and  $\delta_{v-}$  depend on the type of platform where the rolling stock is intended to stop. They shall be as follows:

- $bq_0$  shall be calculated based on the gauge of the track in which the train is intended to operate in accordance with the specification referenced in Appendix A, index [8]. Gauges are defined in chapter 4.2.3.1 of INF TSI.
- $\delta_h$ ,  $\delta_{v+}$  and  $\delta_{v-}$  are defined in tables 7 — 9.

The text quoted from the PRM TSI is not identical to the text in the UTP PRM, ~~the UTP reads:~~ However, the explanations are applicable to the UTP as well.:

~~(2) The values of  $bq_0$ ,  $\delta_h$ ,  $\delta_{v+}$  and  $\delta_{v-}$  depend on the type of platform where the rolling stock is intended to stop. They shall be as follows:~~

- ~~—  $bq_0$  shall be calculated based on the gauge of the track in which the train is intended to operate in accordance with the specification referenced in Appendix A, index 8. The calculation shall take into account the loading gauge(s) on which the vehicle is designated to be operated.~~
- ~~–  $\delta_h$ ,  $\delta_{v+}$  and  $\delta_{v-}$  are defined in tables 7 — 9.~~

The horizontal gap  $\delta_h$  shall be calculated according to the standards listed in chapter 5, index ZB. ~~EN 15273-1:2013, Annex H1~~

The vertical gap  $\delta_v$  should be calculated considering:

- ~~Nominal platform height according to TSI INF: 2013~~ point 4.2.9.2 of the Annex to Commission Regulation (EU) No 1299/2014 (INF TSI)

- ~~Nominal vehicle entrance height above track according to the vehicle construction drawing and vehicle condition according to the standards listed in chapter 5, index ZD, with design mass as defined in EN 15663:2009 (see also point 6.2.3.2 of the PRM TSI)~~
- ~~zero track cant~~

*(3) The technical documentation requested in point 4.2.12 of the LOC&PAS TSI shall include information about:*

- *the height and offset of the theoretical platform resulting in a vertical gap ( $\delta_{v+}$ ) of 230 mm and in a horizontal gap ( $\delta_h$ ) of 200 mm from the point situated in the central position of the nose of the rolling stock's lowest step on a straight level track.*
- *the height and offset of the theoretical platform resulting in a vertical gap ( $\delta_{v-}$ ) of 160 mm and in a horizontal gap ( $\delta_h$ ) of 200 mm from the point situated in the central position of the nose of the rolling stock's lowest step on a straight level track.*

This requirement does not forbid operation at platforms lower 550 mm with a vertical gap higher than 230 mm or at platforms higher 760 mm with a vertical gap higher than 160 mm. TSI-compatible rolling stock should not be harmed by non TSI compliant platforms.

### ~~3.8.11~~ 3.3.12 Point 4.2.2.11.2: Access/egress steps ~~(point 4.2.2.11.2)~~

*(2) Internal steps for external access shall have a minimum depth of 240 mm between the vertical edges of the step and a maximum height of 200 mm. The height of each step may be increased to a maximum of 230 mm if it can be demonstrated that this achieves a reduction of one in the total number of steps required.*

*(5) An external access step, fixed or moveable, shall have a maximum height of 230 mm between steps and a minimum depth of 150 mm.*

*(7) Access to the vestibule shall be achieved with a maximum of 4 steps of which one may be external.*

*(8) Rolling stock intended to stop, in normal operation, at existing platforms below 380 mm height and having their passenger access doors above bogies need not comply with points (2) and (5) above if it can be demonstrated that this achieves a more even distribution of the steps height.*

The basic principle behind ~~parameter-point~~ point 4.2.2.11.2 (8) of the TSI is that the rolling stock cannot be asked to compensate for all deficiencies of the infrastructure compared to the target system.

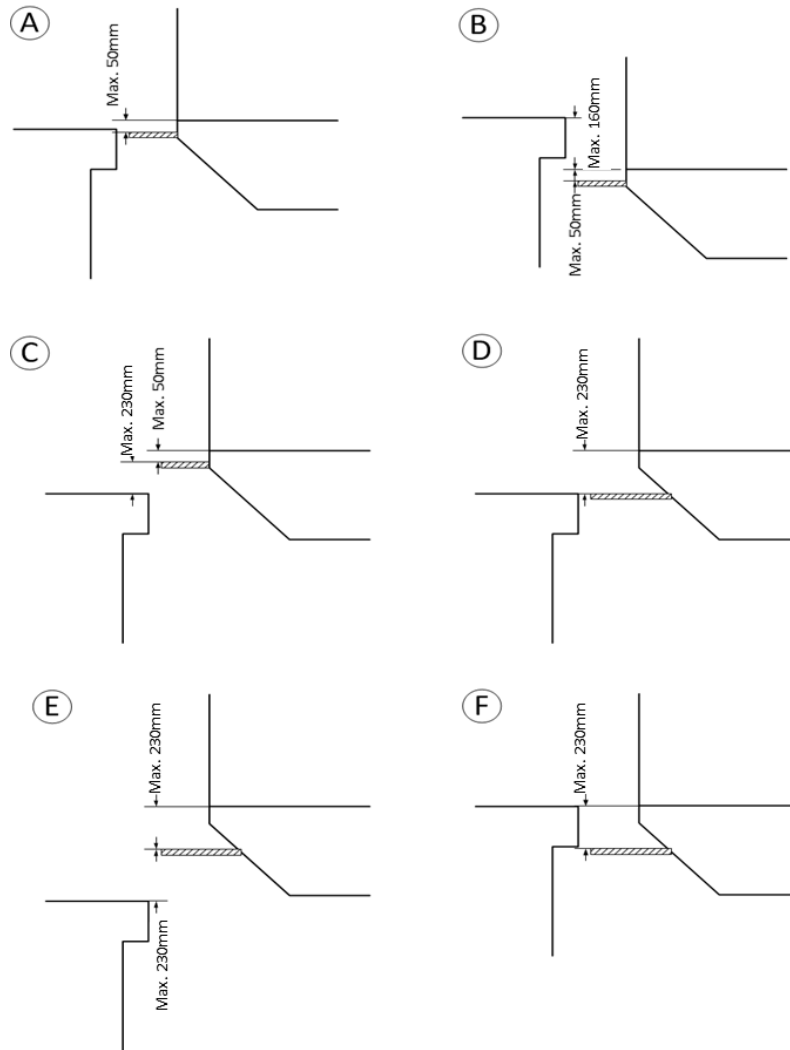
When the platform is below 380 mm, it is allowed for the rolling stock not to comply ~~to~~ with the requirements of points 4.2.2.11.2 (2) and (5) of the TSI, provided that it results in a better distribution of the steps height. The TSI does not mandate the presence of ~~four~~ 4 steps in that case, because the presence of the bogies makes that impossible. It makes it also very difficult to comply to the requirement asking for 240 mm deep steps.

Consequently, the access to those rolling stock may remain difficult. However, it was not the intention of the TSI to “kill” that particular architecture that presents some advantages in terms of capacity. Eventually, the infrastructure should be adapted, to better meet the accessibility requirements asked to the railway system.

It should also be noted that the revised TSI mandates inventories of assets to be done, and an implementation plan for the improvement of accessibility to be performed. Given the lifetime of rolling stock, proposing such a design is probably having a short-term strategy.

Sliding moveable devices are used as shown in the Figure 11: various types of sliding moveable devices. Only in case ‘E’ the sliding moveable device is used as an external access step and has to fulfil the minimum extension width of 150 mm. In all other cases, the sliding moveable device is not an external access step and the requirement to extend a minimum of 150 mm is not applicable.

Note: in cases A, B, D & F the extension is limited to the distance to the edge of the platform.



	Sliding moveable device	Requirement for minimum extension width
A	Gap filler not being a step to vestibule	n.a.
B	Fallthrough protection not being a step to vestibule	n.a.
C	Boarding steps not being a step to vestibule	n.a.
D	Fallthrough protection being a step to vestibule	n.a.
E	Boarding step without level access to vestibule	> 150 mm
F	Fallthrough protection without level access to vestibule	n.a.

Figure 11: various types of sliding moveable devices

3.8.123.3.13 Point 4.2.2.12.1: Movable step and bridging plate (point 4.2.2.12.1)

- (4) The extension of the moveable step or bridging plate shall be completed before the door opening permits the passengers to cross and conversely, removal of the step or plate may only begin when the door opening no longer permits any crossing of passengers.

Operationally, it is not required that the moveable step is activated at every door opening/closing sequence.

Notified Bodies are invited to take this in consideration for the assessment of this parameter.

### ~~3.8.13 Interoperability constituent: interface of the door control device (point 5.3.2.1)~~

*~~(2) It shall be identifiable by touch (for example: tactile markings); this identification shall indicate the functionality.~~*

For example, the functionality “open door” can be identified with the following symbols “<>” while closing door can be identified by the opposite “><”.

### ~~3.8.14 Interoperability constituent: standard and universal toilets: common parameters (point 5.3.2.2)~~

*~~(1) — Any control device, including flushing system, shall contrast with the background surface, and shall be identifiable by touch.~~*

An exception should be made for devices controlled by an infrared. In such case, the pictogram has to be identifiable by touch, but the device itself cannot be.

### ~~3.8.15 Interoperability constituent: Universal toilets (point 5.3.2.4)~~

*~~(10) All amenities shall be readily accessible to a wheelchair user.~~*

Amenities are: toilet paper holder, flush button, wash basin, soap dispenser, mirror, water dispenser and hand dryer (or paper towels when no hand dryer is provided).

The TSI is deliberately silent about the position from which the wheelchair user can reach those amenities: national preferences differ too much on that topic for reaching a common European position. It is therefore acceptable for conformity to the TSI that these amenities are reached either from a wheelchair position or from the toilet bowl.

### ~~3.8.16 Interoperability constituent: Displays (point 5.3.1.1)~~

*~~(2) — Displays shall be sized to show individual station names or words of messages. Each station name, or words of messages, shall be displayed for a minimum of 2 seconds.~~*

Station names can be displayed complete or abbreviated if this is more convenient and if the abbreviation is clear. However, for the assessment of the IC, it is not required to know which station names will be displayed by the device.

### ~~3.8.17 Interoperability constituent: Baby nappy changing table (point 5.3.2.5)~~

*~~(3) It shall be possible to put it into the stowed position with only one hand, using a force not exceeding 25N.~~*

A methodology for the assessment of this parameter is given in the standard listed in chapter 5, index V.

### ~~3.8.18 Interoperability constituent: Boarding aids: on-board lifts (point 5.3.2.10)~~

~~(2) — The lift platform surface shall be slip resistant. At surface level, the lift platform shall have a minimum clear width of 760mm and a length of 1200mm. According to appendix M, an additional length of 50 mm shall be available for feet above a height of 100 mm above the lift platform, considering both inboard and outboard orientations of the wheelchair user.~~

~~(12) — The loading edge barrier (outer barrier) which functions as a loading ramp when the lift is at ground level, shall be sufficient when raised or closed, or a supplementary system shall be provided, to prevent a power wheelchair from riding over or defeating it. It shall be possible to put it into the stowed position with only one hand, using a force not exceeding 25N.~~

See point 2.4.15 for explanations.

### ~~3.9.3.4 Operational rules (points 4.4.1 and 4.4.2)~~

#### ~~3.9.13.4.1~~ Section 4.4: Operating rules

The applicable operating rules are set out in ~~appendix K~~ to point 4.4 of the UTP LOC&PAS. The application of operational requirements as set out in the UTP PRM is subject to national implementation and is not mandatory within the scope of the UTP PRM.

*The following operating rules do not form part of the assessment of subsystems.*

(...)

It is reminded that the conformity to these rules need not be verified at the assessment of the subsystem or of the interoperability constituent. Therefore, the clarifications brought below are not intended to Notified Bodies but to applicants.

(...)

The following operating rules apply to the operation of the whole infrastructure and rolling stock subsystems.

(...)

The operating rules apply regardless of the conformity of the subsystems with the TSI. It means that they apply to the operation of all stations and rolling stock, even those that have not been authorised, renewed or upgraded according to the PRM TSI.

#### 3.4.2 Point 4.4.1: Infrastructure subsystem

The text in the left-hand column states “Reserved”. This indicates that the requirement is not harmonised at the UTP level, i.e. it is subject to the rules applicable in the Contracting State concerned.

– Lighting of platforms

It is allowed that lighting be switched off on platforms where no train is expected.

If nobody is present on a platform, there is no need to illuminate it. Similarly, when a platform is operated partially (e.g. in the night with shorter trains), then only the route to the part that is operated and the operated platform part need to be illuminated.



— Visual and Spoken Information — Achieving Consistency

*Operating rules shall be implemented to ensure consistency between essential visual and spoken information (refer to points 4.2.1.10 and 4.2.1.11). Staff making announcements shall follow standard procedures to achieve complete consistency of essential information.*

(...)

Essential information is information concerning the departure of trains (destination, departure time and delays, platform number).

(...)

*Advertisements shall not be combined with routing information.*

(...)

Depending on the operational characteristics, advertisements and routing information can be physically separated (not on the same display), or displayed on the same display but not at the same moment.

### 3.4.3 Point 4.4.2: Rolling stock subsystem

If the text in the left-hand column states “Reserved”, it means the requirement is not harmonised at the UTP level and is subject to the rules applicable in the Contracting State concerned. In all other parts of point 4.4.2, where a fullwidth text is provided, the explanations are applicable to the UTP as well.

#### 4.4.2.2 Access and Reservation of Priority Seats

*Two possible conditions exist in connection with seats classified as ‘priority’: (i) unreserved and (ii) reserved (refer to point 4.2.2.1.2.1 (2)). In case (i) the operating rules will be directed to other passengers (i.e. provision of signage) requesting them to ensure that priority is given to all persons with disabilities and persons with reduced mobility that are defined as being eligible to use such seats and that occupied priority seats ~~should be~~are given-up as appropriate. In case (ii) operating rules shall be implemented by the ~~R~~railway ~~U~~ndertaking to ensure that the ticketing reservation system is equitable with regards to persons with disabilities and persons with reduced mobility. (...)*

In case the seats need to be reserved mandatorily (case (ii)), the signage is not required in the train itself, see point 4.2.2.1.2.1(2) of the TSI. The ticketing system will have the information about which seat numbers correspond to priority seats.

#### 4.4.2.8 Lighting

When every passenger seat is equipped with an individual light, it is permitted to reduce the lighting level in the unit according to the type of operation (e.g. night service, passenger comfort). The requirements of the specification referenced in Appendix A, index [6], shall be met.

An individual light is a light that can be switched on/off by the passenger.

The reduction of lighting level may also apply only to parts of the unit (e.g. compartments).

Applicable operational means to satisfy the requirement are described in the standards listed in chapter 5, index Y. It is reminded that this is an operational requirement. In case a vehicle is equipped with the reduced lighting level possibility, there should be no additional check by the notified body.

#### 4.4.2.12 Rules for announcement of the final destination and the next stop



*Operational rules shall be implemented to ensure that the next stop is announced no later than 2 minutes prior to the event and that the dynamic information displays revert to show the final destination as soon as the train has stopped (refer to point 4.2.2.7).*

There can be operational rules that foresee that a staff member informs passengers individually of the next stop when they arrive at destination (case of night trains). In such cases, the audible signals required in point 4.2.2.7 of the TSI need not be operated.

### **3.10 PRM Signage (appendix N)**

#### *International wheelchair sign*

*The sign which identifies wheelchair accessible areas shall include a symbol in accordance with the specifications referenced in Appendix A, index 12.*

#### *Inductive loop sign*

*The sign indicating where inductive loops are fitted shall include a symbol in accordance with the specification referenced in Appendix A, index 13.*

#### *Priority seating sign*

*The sign indicating where there are priority seats shall include symbols in accordance with figure N1.*

~~When it is required that the sign includes a symbol "in accordance with", this refers only to the symbol (the drawing) and does not refer to the whole sign. This means that the shape of the pictogram is not necessary a square with right angles as shown in the TSI or in the referenced standards, but it can have, for instance, rounded angles. What is important is that the drawing inside is present and compliant.~~

*The signs provided for in point 4.2.1.10 shall have a dark blue background and a white symbol. Dark blue shall have a contrast of 0.6 relatively to white.*

~~A dark blue that would tend to black is acceptable provided that the contrast remains  $> 0,6$ .~~

#### 4.4.2.19 Forming trains from individual vehicles compliant with this TSI

When vehicles that have been individually assessed in accordance with point 6.2.7 are formed into a train, operational procedures shall be in place to ensure that the complete train complies with point 4.2 of this TSI.

When forming a train, it is also possible that the total number of wheelchair spaces required in Table 5 of point 4.2.2.2 of the TSI is exceeded. In such case, equipment such as bicycle hooks or ski racks can be installed only into or in front of the wheelchair spaces in excess to the requirement of Table 5.

#### 4.4.2.20 Providing services on-board trains

When a service is provided to passengers in a specific area of a train that can't be accessed by wheelchair users, operational means shall be in place to ensure that:

- free of charge assistance is available to assist wheelchair users reach the service; or
- the service is delivered free of charge to wheelchair users at the wheelchair spaces unless the nature of the service makes it impossible to provide it remotely.

Currently known services like the following travel zones: 'family compartments, silent compartments, business compartments, fun compartments, dog and cat compartments' are examples of services impossible to provide remotely. Services like meals and drinks can be delivered at the wheelchair spaces by on-board service staff.

### 3.11.3.5 Interoperability Constituents

#### 3.5.1 Point 5.3.1.2: Platform ramps

*(5) The ramp surface shall be slip resistant and shall have a stable position with an effective clear width of a minimum of 760 mm.*

In order for a ramp to be used with an existing rolling stock which is not compliant with the PRM TSI, the effective clear width of the ramp may be adjusted to achieve widths lower than 760 mm.

For that reason, platform ramps may be adjustable in width.

The notified body should check only that the ramp being assessed has a stable position for which the width is of 760 mm minimum.

#### 3.11.3.5.2 2.4.15 Interoperability Constituent: Point 5.3.1.3: Platform lifts

*(5) At surface level, the lift platform shall have a minimum clear width of 800 mm and a length of 1200 mm. According to Appendix M, an additional length of 50 mm shall be available for feet above a height of 100 mm above the lift platform, considering both inboard and outboard orientations of the wheelchair user.*

*(...)*

*(14) The loading-edge barrier (outer barrier) which functions as a loading ramp when the lift is at ground level, shall be sufficient when raised or closed, or a supplementary system shall be provided, to prevent a power wheelchair from riding over or defeating it.*

Figure 12 below shows an acceptable mean to comply with the requirements.

Required additional length for feet: 1250 mm that shall be ensured at both platform ends (for inboard and outboard orientation).

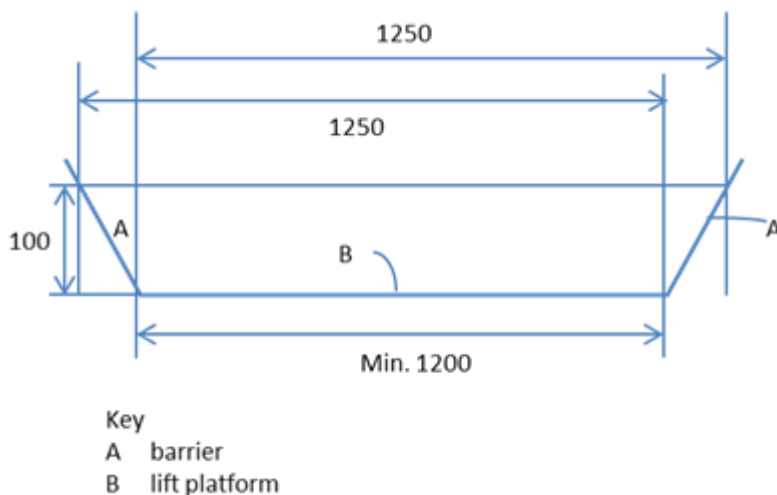


Figure 126: Clear length of the lift platform

In order to prevent a power wheelchair from riding over the barrier, a height of 100 mm is recommended (such value is prescribed for instance in EN 1756-2:2004+A1:2009: ~~Tail lifts — Platform lifts for mounting on wheeled vehicles — Safety requirements — Part 2: Tail lifts for passengers~~).

*(6) The bridging plate overriding the gap between the lift platform and the carriage floor shall have a stable position with a minimum width of 760 mm.*

In order for a lift to be used with an existing rolling stock which is not compliant with the PRM TSI, the effective clear width of the lift may be adjusted to achieve widths lower than 760 mm.

For that reason, platform lifts may be adjustable in width.

The notified body should check only that the lift being assessed has a stable position for which the width is of 760 mm minimum.

~~3.11.23.5.3~~ ~~2.5.13 Interoperability constituent~~ Point 5.3.2.1: iInterface of the door control device ~~(point 5.3.2.1)~~

*(1) A door control device shall have visual indication, on or around it when enabled and shall be operable by the palm of the hand exerting a force not greater than 15 N.*

“Interface of the door control device” in this context is a push button triggering the opening or closing of a door.

*(2) It shall be identifiable by touch (for example: tactile markings); this identification shall indicate the functionality.*

For example, the functionality “open door” can be identified with the following symbols “< >” while closing door can be identified by the opposite “> <”, see also the standards listed in chapter 5, index ZE.

~~3.11.33.5.4~~ ~~2.5.14. Interoperability constituent~~ Point 5.3.2.2: sStandard and universal toilets: common parameters ~~(point 5.3.2.2)~~

~~(43)~~ *Any control device, including flushing system, shall contrast with the background surface, and shall be identifiable by touch.*

An exception should be made for devices controlled by an infrared light. In such case, the pictogram has to be identifiable by touch, but the device itself cannot be. Examples can be found in the standards listed in chapter 5, index ZF.

*(4) Any door control device and other equipment inside the toilet compartment (except for baby nappy change facilities and call for aid devices) shall be operable by exerting a force not exceeding 20 N.*

“Door control device” in this context refers to any manual control device (including the mechanical latching or unlatching of a manual door). In case the door control device is a push button, point 5.3.2.1 (1) of the TSI applies.

~~3.11.43.5.5~~ ~~2.5.15 Interoperability constituent~~ Point 5.3.2.4: Universal toilets ~~(point 5.3.2.4)~~

*(10) All amenities shall be readily accessible to a wheelchair user.*

Amenities are: toilet paper holder, flush button, wash basin, soap dispenser, mirror, water dispenser and hand dryer (or paper towels when no hand dryer is provided).

The TSI is deliberately silent about the position from which the wheelchair user can reach those amenities: national preferences differ too much on that topic for reaching a common European position. It is therefore acceptable for conformity to the TSI that these amenities are reached either from a wheelchair position or from the toilet bowl.

### 2.5.16. Interoperability constituent: Displays (point 5.3.1.1)

*~~(1) Displays shall be sized to show individual station names or words of messages. Each station name, or words of messages, shall be displayed for a minimum of 2 seconds.~~*

~~Station names can be displayed complete or abbreviated if this is more convenient and if the abbreviation is clear. However, for the assessment of the IC, it is not required to know which station names will be displayed by the device.~~

### 3.5.6 ~~2.5.17. Interoperability constituent~~ Point 5.3.2.5: Baby nappy changing table ~~(point 5.3.2.5)~~

*~~(3) It shall be possible to put it into the stowed position with only one hand, using a force not exceeding 25 N.~~*

A methodology for the assessment of this parameter is given in the standard listed in chapter 5, index V.

### 3.5.7 Point 5.3.2.6: Interface of the call for aid device

*A call for aid device shall:*

*(1) be indicated by a sign having a yellow background contrasting with a black symbol (in accordance with the specification referenced in Appendix A, Index [10]). The symbol shall represent a bell or a telephone. The sign can be on the button or bezel or on a separate pictogram.*

As described in ERA Technical Opinion ERA/OPI/2016-3<sup>4</sup>, “Interoperability constituents shall be certified according to the latest applicable version of a TSI“. According to the Technical Opinion, “there are two exceptions for which the constituent could be certified according to an earlier version of a TSI (...): (i) a derogation granted to the subsystem and (ii) ICs for which there is no backward compatibility.”

In the case of the call for aid device specified in point 5.3.2.6 of the PRM TSI, there is no backward compatibility, i.e. a call for aid device compliant to the TSI as amended by Commission Implementing Regulation (EU) 2023/1694 isn't compatible with a subsystem compliant to an earlier version of the TSI. Consequently, call for aid devices may still be certified according to earlier versions of the PRM TSI when they are intended to be installed on subsystems compliant with earlier versions.

### 3.11.53.5.8 ~~2.5.18. Interoperability constituent~~ Point 5.3.2.10: Boarding aids: on-board lifts ~~(point 5.3.2.10)~~

*(2) The lift platform surface shall be slip resistant. At surface level, the lift platform shall have a minimum clear width of 760 mm and a length of 1200 mm. According to ~~a~~ Appendix M, an additional length of 50 mm shall be available for feet above a height of 100 mm above the lift platform, considering both inboard and outboard orientations of the wheelchair user.*

*(...)*

*(12) The loading-edge barrier (outer barrier) which functions as a loading ramp when the lift is at ground level, shall be sufficient when raised or closed, or a supplementary system shall be provided, to prevent a power wheelchair from riding over or defeating it. ~~It shall be possible to put it into the stowed position with only one hand, using a force not exceeding 25N.~~*

<sup>4</sup> Opinion of the European Union Agency for Railways to the European Commission regarding the question of NB-Rail QC-STR-009 concerning the certification according to withdrawn TSIs. Available on ERA website at: <https://www.era.europa.eu/library/documents-regulations/opinions-and-technical-advice>.

See point ~~5.3.1.32-4.15~~ for [more information](#)~~explanations~~.

### 3.6 Assessment of conformity and/or suitability for use

#### ~~3.2. Assessment phases~~

##### 3.6.1 Point 6.2.1: EC verification (general)

(...)

*For the Infrastructure subsystem, the objective of inspection by a notified body is to ensure that the requirements of the TSI are fulfilled. The inspection is performed as a visual examination; in case of doubt, for the values verification, the notified body can ask the applicant to perform measurements. In case different methods are possible (e.g. for contrast), the measurement method shall be the one used by the applicant.*

The OTIF and EU procedures and rules for the verification of conformity of vehicles with UTP or TSIs are harmonised. For OTIF, the procedures are set out in UTP GEN-D.

For infrastructure, the procedures and rules for verification of conformity with UTPs remains within the remit of each Contracting State. Please see the UTP INF for further information.

In case the NoBo and applicant agrees photos / videos may be an appropriate measure to perform a visual examination.

##### 3.6.2 Point 6.2.2: Procedures for EC verification of a subsystem (modules)

(...)

*The characteristics of the subsystem to be assessed during the relevant phases are indicated in ~~Appendix E~~ to this TSI, Table E.1 for infrastructure subsystem and Table E.2 for rolling stock subsystem. The applicant shall confirm that each subsystem produced complies with the type.*

In table E1 of the TSI, the line entitled “Obstacle free routes” covers both points 4.2.1.2.1 “Horizontal circulation” and 4.2.1.2.2 “Vertical circulation” of the TSI.

Regarding boarding aids on platforms (point 4.2.1.14 of the TSI); the only parameter to check is the secured storage of those boarding aids, and the absence of hazard or obstruction for passengers. This point 4.2.1.14 is not mentioned in the table because it is not required to be checked by a ~~Notified~~ ~~B~~body.

##### 3.6.3 Point 6.2.4: Technical solutions giving presumption of conformity at design stage

#### ~~Point 6.2.4: Technical solutions giving presumption of conformity at design stage~~

*With regard to this TSI, the infrastructure subsystem can be considered as an assembly made of a succession of recurring subcomponents such as:*

- Parking facilities,
- Doors and entrances, transparent obstacles with their marking,
- Tactile walking surface indicators, tactile information along obstacle-free routes,
- Ramps and stairs with handrails,
- Mounting and highlighting of furniture,
- Ticketing or information counters,
- Ticket vending and control machines,
- Visual information: signposting, pictograms, dynamic information,
- Platforms, including ends and edges, shelters and waiting areas when provided,
- Level track crossings.

*For those subcomponents of the infrastructure subsystem, presumption of conformity may be assessed at design stage prior to and independently from any specific project. An intermediate statement of verification (ISV) shall be issued by a notified body at design stage.*

An applicant can define a standard solution for covering each of the above listed points (which are not exhaustively listed). For instance, an applicant can design a standard accessible desk and have this design verified by a **N**otified **B**ody who would issue an ISV for this “accessible desk”.

After this ISV has been issued, the applicant can install the verified “accessible desk” in any new, renewed or upgraded station without further verification.

### 3.7 Implementation of the TSI

## **4. IMPLEMENTATION**

### 3.7.1 Point 7.1.1: ~~4.1. Application of this TSI to~~ new Infrastructure ~~(point 7.1.1)~~

The application of infrastructure related parameters of the UTP PRM is ~~voluntary~~ not mandatory, but recommended.

(...)

*It is ~~This TSI does~~ not mandatory to apply this TSI to new stations which have already been granted a building permit or which are subject to a contract for construction works that is either already signed or under final phase of tendering procedure at the date of application of this TSI. However, an earlier version of this TSI must be applied within its defined scope. The consistence of applicable requirements of partial application of different versions of this TSI to particular sections of the station must be justified by the applicant certified by the notified body. ~~Anyhow, in such cases, PRM TSI 2008 has to be applied within its defined scope. For those station projects, where PRM TSI 2008 will have to be applied, it is permissible (but not mandatory) to use the revised version, either totally or for particular sections; in case of application limited to particular sections, the applicant has to justify and document that applicable requirements remain consistent, and this has to be approved by the notified body.~~*

(...)

~~The text quoted from the PRM TSI is not identical to the text in the UTP PRM, the UTP reads:~~

*~~This UTP does not apply to new stations which have already been granted a building permit or which are subject to a contract for construction works that is either already signed or under final phase of tendering procedure at the date of application of this UTP.~~*

*~~It is recommended to apply, as far as feasible, the UTP PRM to new stations which have already been granted a building permit or which are subject to a contract for construction works that is either already signed or under final phase of tendering procedure at the date of application of this UTP.~~*

The revised TSI can be used for station projects that should normally be assessed according to the [PRM TSI 2008](#); in such a case, it does not necessarily need to be applied in its entirety. There may be reasons not to apply the revised TSI entirely: for example, civil works may be advanced, with 800 mm entrance doors already in place making the difficult the use of the revised TSI that requires 90 cm. This should not prevent an applicant from using the new TSI for the marking of those doors, for instance.

In such case, it is necessary to ensure that the mix of TSIs remains consistent and does not result in contradictions or to the disappearance of some parameters. The applicant shall justify that, and a notified body has to approve it.

[\(...\)](#)

*Where stations which were closed for a long time to passenger service are put in service again, this may be treated as renewal or upgrade [in accordance with](#) ~~ing to~~ point 7.2.*

[\(...\)](#)

The purpose of this sentence is to clarify the case of the re-opening of stations in contexts such as the re-opening of lines. In case a station is re-opened to passenger service after being closed because no service was provided, it should not be considered as a new station subject to full compliance with the requirements of chapter 4 [of the TSI](#) but as an upgraded existing station, subject to a gradual improvement of accessibility including conformity with the TSI only for those parts that are upgraded.

### [3.7.2 Point 7.1.2: New Rolling Stock](#)

*[\(2\) Compliance with this Annex in its version applicable before 28 September 2023 is deemed equivalent to compliance with this TSI, except for the TSI changes listed in Appendix P.](#)*

*[\(3\) The rules related to the EC type or design examination certificates for the rolling stock subsystem and the associated interoperability constituents shall be as specified in point 7.1.3 of the LOC&PAS TSI.](#)*

[See the application guide of the LOC&PAS TSI for information about the transition regime and the change categorisation.](#)

[The same explanation regarding the transition regime is also provided in the application guide for UTP LOC&PAS.](#)

### [3.7.3 Point 7.2.2: Application of this TSI to existing Infrastructure](#)

*[For infrastructure, the conformity with this TSI is mandatory for those parts that are renewed or upgraded. However, the TSI recognizes that, due to the characteristics of the inherited railway system, compliance of existing infrastructure may be achieved through a gradual improvement of accessibility.](#)*

[The definition of the scope of an upgrade or renewal is the responsibility of the applicant in accordance with its investment plan and, where appropriate, with legal or regulatory plans including the National Implementation Plan.](#)



Systems and components that are not included in the scope of a particular upgrade or renewal programme do not have to be made compliant at the time of such a programme.

The scope of an upgrade or renewal may focus on some parameters of the TSI and/or on a specific area of a station; the assessment should be performed only on that scope defined by the applicant.

### **3.8 Appendices of the PRM TSI**

#### **3.8.1 2.7-Appendix N: PRM Signage** ~~(appendix N)~~

(...)

##### ***International wheelchair sign***

*The sign which identifies wheelchair accessible areas shall include a symbol in accordance with the specifications referenced in Appendix A, index [12] or index [13].*

##### ***Inductive loop sign***

*The sign indicating where inductive loops are fitted shall include a symbol in accordance with the specification referenced in Appendix A, index [143].*

##### ***Priority seating sign***

*The sign indicating where there are priority seats shall include symbols in accordance with figure N1.*

(...)

When it is required that the sign includes a symbol “in accordance with”, this refers only to the symbol (the drawing) and does not refer to the whole sign. This means that the shape of the pictogram is not necessary a square with right angles as shown in the TSI or in the referenced standards, but it can have, for instance, rounded angles. What is important is that the drawing inside is present and compliant.

~~A dark blue that would tend to black is acceptable provided that the contrast remains > 0,6.~~

## **4. CONFORMITY ASSESSMENT**

### **4.1 Assessment of the parameters of the ~~second~~ 2<sup>nd</sup> category**

The international and European standards represent the state-of-the-art or the benchmark for accessibility. Therefore, conformance to these standards is the easiest, clearest and in many cases the cheapest approach.

Where an applicant has chosen not to apply such standard then this approach is acceptable. However, this may involve additional efforts to justify that equivalence in terms of accessibility has been reached.

The application of a pre-existing ~~N~~national, ~~R~~regional or local rule or standard, or validated company rule, when such rule has been commonly applied in other public areas, is acceptable. In such case, the equivalence only consists in a demonstration that the rule or standard is already commonly applied in railway / station infrastructure or other public areas or that it is mandatory by legislation.

When an applicant decides to apply neither the international or European standards nor a ~~N~~national, ~~R~~regional, local or validated company rule or standard, but another rule, equivalence can be demonstrated by:

- ~~The a~~Application of the “innovative solution” process described in the Article 7 of ~~the~~ Commission Regulation 1300/2014, or
- Prototyping and tests: tests shall involve representative groups of PRMs presenting different mobility reductions.

The ~~f~~Figure 13 below illustrates the possibilities given to an applicant for satisfying a requirement of the TSI, and the general rule for the verification of the conformity to the TSI in each case.

The first decision box is the only one that is mandatory, i.e when the requirement is technically detailed, it needs to be complied with.

Then, the different possibilities are listed in an order of easiness of the demonstration of compliance, not in an order of acceptability of the solution: all solutions are equally acceptable and none of them shall be considered preferable to the others.

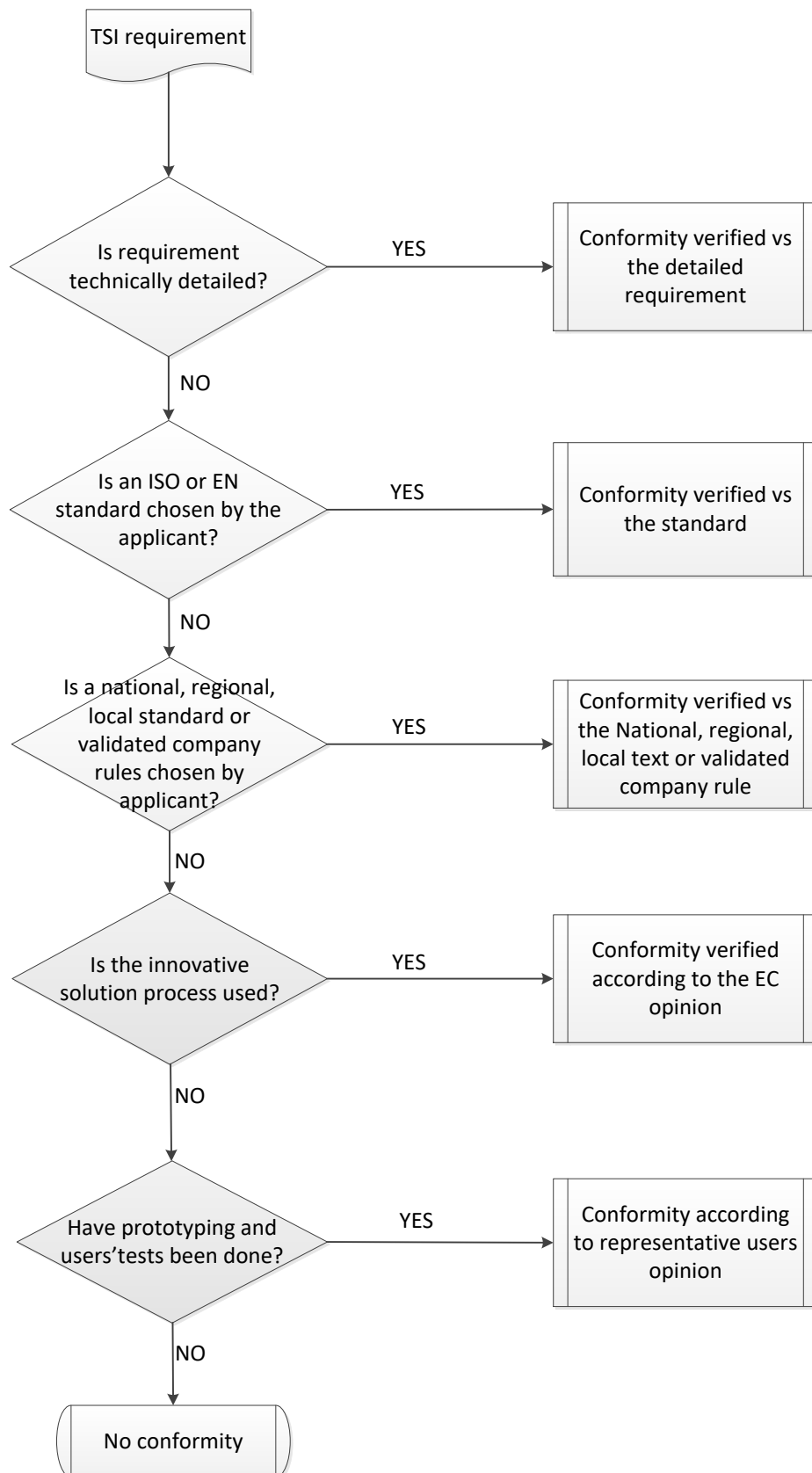


Figure 137: acceptable means of compliance

## 5. APPLICABLE SPECIFICATIONS AND STANDARDS

For general use of standards in the TSI application guide please refer to the “Guide for the Application of TSIs”.

~~International and European s~~Standards of voluntary use which have been identified during the drafting process of the TSI are listed in the ~~table~~, column “Clause(s) of ~~the~~ Standard ~~Nº~~”; as far as possible, the clause of the standard which is relevant for the conformity assessment of the TSI requirement ~~is~~ should be identified. In addition, the column “Voluntary ref – Purpose” should gives a written explanation regarding the purpose of the reference to the standard.

~~The table is to be revised on a regular basis, in order to take into account new or revised harmonised standards.~~

~~In particular, a series of European standards about accessibility is expected to be published in 2015 or 2016; this annex will be adapted after their publication. Until their publication, some specific methodologies from these standards are available in appendix 2.~~

Where relevant, an additional explanation is given in the chapters above.

Index	Characteristics to be assessed	Clause(s) of the <del>S</del> standard <del>Nº</del>	<u>Voluntary ref – Purpose</u>
A	<u>2.2</u> Contrast	ISO 21542:2011, § <u>8.3.6</u> , § <u>5.3</u> , § <del>13.5.6</del> , <del>35</del> , <del>40.6</del>	
		<u>EN 16584-1:2017, § 6</u> <del>See Appendix 2, §1</del>	
B	<u>2.2</u> Self-contrast	<u>EN 16584-1:2017, § 6</u> <del>See Appendix 2, §1</del>	
C	<u>2.3</u> Tactile	ISO 21542:20 <u>12</u> 1, § <u>5.5.9 to § 5.5.12</u> <del>40.10 to 40.13</del>	For the detailed characteristics of the tactile signage.
		<u>EN 16584-1:2017, Annex B</u>	
D	<u>2.3</u> Tactile walking surface indicators <u>3.2.4: Route identification</u>	ISO 21542:20 <u>12</u> 1, Annex <u>B</u> <del>A</del>	
		ISO 23599:201 <u>9</u> <del>2</del>	
		ISO 21542:20 <u>12</u> 1, § <u>8.3.6</u> <del>13.5</del>	For the details of the tactile walking surface indicators for stairs
E	<u>2.4</u> Readability of a typeface	<u>EN 16584-2:2017, Annex F</u> <del>See Appendix 2, §2</del>	
		ISO 21542:20 <u>12</u> 1, § <u>40.5.5</u> <del>5</del>	Except the paragraph about the reading distance and letter height
F	<u>2.5</u> Palm operation	<u>EN 16585-3:2017, § 6</u> <del>See Appendix 2, §3</del>	
G	<u>2.6</u> Slip resistance of floor surfaces	<u>EN 16584-3:2017, § 6</u> <del>See Appendix 2, §4</del>	Applicable for the assessment of boarding aids and rolling stock access steps
		EN 14041:20 <u>18</u> <del>04</del>	

Index	Characteristics to be assessed	Clause(s) of the <del>S</del> standard <del>N</del> <sup>o</sup>	<u>Voluntary ref</u> – Purpose
		DIN 51130: <u>2023-03</u> <sup>5</sup>	A category R9 and better is acceptable, R10 and better in toilets areas when provided. For weather protected areas outside a building (e.g. platforms) R10 as a minimum applies. For outside areas (e.g. platforms) that are not weather protected R11 or R10 / V4 applies.
		NF XP 05-011: <u>2019</u> <sup>6</sup>	A category PC6 and better is acceptable, PC10 and better in toilets areas when provided
		EN 13893:2002	A dynamic coefficient of friction of 0.3 and better is acceptable
		<del>CEN/TS</del> EN 16165:20 <u>21</u> <sup>2</sup>	Determination of the slip resistance of pedestrian surfaces – Methods of evaluation
H	<u>2.6</u> Slip resistance of ground surfaces	EN 1338: <u>2003</u> <del>Concrete paving blocks — Requirements and test methods</del>	
		EN 1339: <u>2003</u> <del>Concrete paving flags — Requirements and test methods</del>	
		EN 1341: <u>2012</u> <del>Slabs of natural stone for external paving — Requirements and test methods</del>	
		<del>CEN/TS</del> EN 16165:20 <u>21</u> <sup>2</sup>	Determination of the slip resistance of pedestrian surfaces – Methods of evaluation
I	<del>Not used</del> <del>Slip resistance of boarding aids and access steps</del>	See Appendix 2, §4	<del>Applicable for the assessment of boarding aids and rolling stock access steps</del>
J	<u>3.2.1</u> Parking places	ISO 21542:202 <u>1</u> <sup>+</sup> , § <u>6.2</u>	§ 6.2 <u>2</u> and 6.2 <u>3</u> are used for the assessment. Other paragraphs can be used for guidance but they need not be assessed.
K	<u>3.2.2</u> Reflectance of the floor surface	ISO 2813: <u>2014</u> <del>1999</del>	A gloss level of 50 or lower is acceptable.
L	<u>3.2.3</u> Ramps	ISO 21542:202 <u>1</u> <sup>+</sup> , § <u>8.4.2</u>	Tables <u>62</u> and <u>73</u> for the maximum slope and length of the ramps
<u>L!</u>	<u>3.2.3</u> Height of the handrails	<u>ISO 21542:2021, § 8.4.4</u>	
M	<u>3.2.5</u> Door operating devices	ISO 21542:202 <u>1</u> <sup>+</sup> , § <u>9.1.18.1</u> , § 36.1 to § 36.6	Except § <u>9.1.148.1.1</u> for the door width, <u>9.1.1.4</u> , <u>9.1.1.5</u> , and <u>9.1.1.6</u> <del>18.1.5, 18.1.6, 18.1.7 and 18.1.13</del>
N	<u>3.2.6</u> Highlighting of transparent obstacles <u>3.3.5</u> interior doors	ISO 21542:202 <u>1</u> <sup>+</sup> , § <u>9.1.1.4</u> <del>18.1.5</del>	
		<u>EN 16584-1:2017 Annex B6</u>	

<sup>5</sup> Being a parameter of the 2<sup>nd</sup> category, slip resistance can be covered by a national standard. See chapter 2.1 of this application guide.

<sup>6</sup> Idem

Index	Characteristics to be assessed	Clause(s) of the <del>S</del> standard- <del>N</del> °	<u>Voluntary ref – Purpose</u>
O	<u>3.2.7 Accessible toilets</u>	ISO 21542:2021+, § <u>10.5.1 to 10.5.14</u> <del>26.1 to 26.15</del>	§ <u>10.5.3 and 10.5.5 to 10.5.8</u> <del>26.4 and 26.6 to 26.9</del> are used for the assessment. Other paragraphs can be used for guidance but they need not be assessed.
		<u>EN 16585-1:2017</u>	<u>For rolling stock</u>
P	<u>3.2.8 Guarding of suspended items</u>	ISO 21542:2021+, § <u>6.3.8</u> <del>7.14</del>	
Q	<u>3.2.9 Accessible desk</u>	ISO 21542:2021+, § <u>10.19</u>	
R	<u>3.2.9 Accessible ticket vending machines</u>	ISO 21542:2021+, § <u>9.2.7</u> <del>36.8</del>	
S	<u>3.2.10 Illuminance levels</u>	EN 12464-1: <del>2021</del> <del>and 2</del>	
		<u>EN 12464-2:2014</u>	
		ISO 21542:2021+, § <u>5.4</u> <del>33</del>	
T	<u>3.2.10 Emergency lighting</u>	EN 1838:2013	
U	<u>3.2.11 Pictograms</u>	ISO 3864-1:2011	For the colours and shapes of the signs
V	<u>3.5.6 Baby nappy changing table</u>	<u>EN 16585-1:2017, § 5.5</u> <del>See Appendix 2, §5</del>	
<u>W</u>	<u>3.3.2 Priority seats</u>	<u>EN 16585-2:2017, § 5.2.2.1 (3)</u>	<u>Location of priority seats</u>
<u>X</u>	<u>3.3.3 Wheelchair spaces</u>	<u>EN 16585-2:2017</u>	<u>Layouts of wheelchair spaces</u>
<u>Y</u>	<u>3.4.3 Operational rule - lighting</u>	<u>EN 13272-1:2019, § 4.1.6 and 4.1.7</u>	<u>Reduction in lighting level</u>
<u>Z</u>	<u>3.3.4 Door operating signals</u>	<u>EN 14752:2019+A1:2021, clause 5.2.1.3.1 is extended to railway vehicles</u>	
<u>ZA</u>	<u>3.2.12 Platform width and edge of platform</u>	<u>EN 16584-1:2017, clause 5.2.6</u>	
<u>ZB</u>	<u>3.3.11 General requirements</u>	<u>Annex B of EN 16586-1:2017</u>	
<u>ZC</u>	<u>3.3.11 horizontal gap <math>\delta_h</math></u>	<u>Annex H of EN 15273-1:2013+A1:2016/AC:2017</u>	
<u>ZD</u>	<u>3.3.11 vertical gap <math>\delta_v</math></u>	<u>5.1 of EN 16586-2:2017</u>	<u>Vehicle conditions</u>
<u>ZE</u>	<u>3.5.3 Interface of the door control device</u>	<u>Annex B of EN 16584-2:2017.</u>	
<u>ZF</u>	<u>3.5.4 Standard and universal toilets: common parameters</u>	<u>Annex L of EN 16584-2:2017.</u>	

## **~~APPENDIX 1: EXAMPLES TO ILLUSTRATE THE “EQUIVALENCE” OF NATIONAL STANDARDS WITH EUROPEAN OR INTERNATIONAL STANDARDS~~**

~~The basis for the appendixes of this document is the ERA appendix to the Application guide for PRM TSI, with reference ERA/GUI/02-2013/INT.~~

~~The appendix 2 contains only extracts from a series of standards that are at time of writing of this guide going through the very final stage of the CEN approval process. As soon as the standards are available, the text of this appendix will be replaced by references to the standards.~~

### **~~1.—Quantity of Parking Places (4.2.1.1)~~**

~~(1) —Where a station specific parking area exists, there shall be sufficient and adapted parking spaces reserved for persons with disabilities and persons with reduced mobility eligible to utilise them at the nearest practicable position, within the parking area, to an accessible entrance.~~

~~The requirement to be fulfilled is the provision of a sufficient number of adapted parking places. Being a parameter of the second category, this requirement can be satisfied by an International standard and by other standards as expressed in point 2.3.1.~~

~~Regarding the quantity of parking spaces, ISO 21542:2011 requires:~~

~~“If no national requirements or regulations are available, the following minimum requirements concerning the number of parking places shall apply:~~

- ~~• —a minimum of 1 accessible designated parking space should be provided in every parking area,~~
- ~~• —up to 10 parking spaces: 1 designated accessible parking space,~~
- ~~• —up to 50 parking spaces: 2 designated accessible parking spaces,~~
- ~~• —up to 100 parking spaces: 4 designated accessible parking spaces,~~
- ~~• —up to 200 parking spaces: 6 designated accessible parking spaces,~~
- ~~• —over 200 parking spaces: 6 designated accessible parking spaces + 1 for each additional 100.”~~

~~For example, the French regulation (Annexe 8 of the Circulaire Interministerielle n° DGUHC 2007-53 of 30<sup>th</sup> of November 2007) requires the following quantity to be provided:~~

~~“Adapted parking places shall represent a minimum of 2% of the total number of places for the public. The minimum number of adapted places is rounded up to the superior value. Above 500 places, the minimum number, which shall not be lower than 10, is determined by a “Municipal Arrêté” (i.e regulated by the City).”~~

~~In the UK, the Code of Practice about Accessible Train Station Design for Disabled People, published by the Department for Transport (version 2 from September 2010) quotes the British Standard BS 8300, § 4.2.1.4:~~

~~“The number of designated disabled persons’ parking spaces will depend on the overall capacity of the car park. The minimum number of spaces designated for disabled motorists must be 5 per cent of the total capacity of the car park.~~

~~In addition to this 5 per cent of capacity, a minimum of one space should be provided per employee who is a disabled motorist.”~~



The table below summarizes the quantity of adapted parking places to provide according to each of the standards:

Number of parking places	Quantity of adapted places		
	ISO 21542	French legislation	British code of Practice (places for the public only)
10	1	1	0.5
50	2	1	2
80	4	2	4
100	4	2	5
150	6	3	7.5
200	6	4	10
400	8	8	20
600	10	10 or more (City regulation)	30

Obviously, the number of adapted parking places is not identical when calculated according to the three different standards. However, all solutions should be considered equivalent because they define a minimum quantity of adapted parking places to be provided: reasons why the French Regulation results in a lower number of places than ISO 21542 while the British Code of Practice results in a higher number need not to be examined as long as these National rules commonly apply to other car parks than station car parks.

For that reason, the point 3.1 of this guide mentions that “the equivalence only consists in a demonstration that the rule or standard is already commonly applied in railway /station infrastructure or other public areas or that it is mandatory by legislation.”

Also, this example illustrates the clarification provided in point 2.3.1 of this guide: “National/regional/local standards can only be applied on the territory they cover”: it is not the intention of the PRM TSI to allow cherry picking between all national/regional/local standards applicable in Europe; such cherry picking would be detrimental to the harmonisation at national or local level.

## 2. Value of the ramps

*(3) Ramps shall be installed for persons with disabilities and persons with reduced mobility unable to use stairs where lifts are not provided. They shall have a moderate gradient. A steep gradient is allowed for ramps on short distances only.*

The ISO 21542 authorizes several gradients from 5% to 12.5%, and for each gradient authorizes a maximum length between two landings (no landing required for a 5% gradient, one landing every 600mm for a 12.5% gradient).

The French Regulation already cited authorizes a gradient of 5% with a landing every 10m, 8% with a landing every 2m and 10% with a landing every 500mm.

~~The Règlement Grand-Ducal of 25th January 2008 modifying the text from 23rd November 2001 from Luxembourg, relative to the accessibility to public buildings authorizes a gradient of 6% with a landing every 6m,~~

~~The British code of Practice already cited authorizes several gradients from 5% to 8.3%, and for each gradient authorizes a maximum length between two landings (10m between landings for a 5% gradient, and 2m between landings for a 8.3% gradient).~~

~~These examples, which are not exhaustive, illustrate again the equivalence of technical solutions for the fulfilment of the requirement. They are all acceptable, even if resulting in different ramps.~~

## APPENDIX 2: SPECIFIC METHODOLOGIES

### 1.—Determination of the LRV values and of the contrast

When applying colour to two adjacent surfaces, to provide sufficient contrast, the contrast between the colours shall be determined by the light reflectance value, the hue and by the chromatic value of each.

For the purposes of this methodology “Contrast” is to be assessed by the diffused light reflectance value, but can be enhanced by variation in hue and chroma.

#### 1.1.—Establishing LRV values

##### Method of establishing LRV value if the specification of the colour IS known

If the materials chosen are from a colour system that defines the LRV values of any given colour (e.g. NCS) or have a previously confirmed LRV value (following testing) then these are used when calculating the contrast.

Define colours for all items, surfaces, materials, etc. where contrast is required existing known LRV values shall be used.

##### Method of establishing LRV value if the specification of the colour IS NOT known

The method of test is applicable to:

- opaque paint coatings and paint systems, including those that cause extreme angular dependences of reflected light and those that have a surface texture of  $< 2$  mm;
- opaque coverings including those that cause extreme angular dependences of reflected light, and those that have an unyielding texture of  $< 2$  mm;
- opaque coverings with a yielding pile, e.g. carpet;
- opaque materials, including those that cause extreme angular dependences of reflected light, and those that have a texture of  $< 2$  mm, e.g. finished metals;
- opaque materials coated with non-opaque coatings or coverings, e.g. timber door coated with a wood stain, including those that:
  - cause extreme angular dependences of reflected light;
  - have a texture of  $< 2$  mm;
- multi-coloured surfaces;
- ordinary materials.

The method of test is not suitable for the following surfaces:

- thermochromic; photochromic; retroreflecting; fluorescent; phosphorescent; surfaces involving electrical power for light emission; self-luminous characteristics or for free-standing, non-opaque materials, e.g. glass and clear plastic for curved surfaces.

#### Apparatus

A sphere type spectrophotometer shall be used, capable of measuring LRV to a precision compatible with the reproducibility of 1 unit % E CIE  $L^*a^*b^{*7}$ .

This is termed “instrument” within this standard. The instrument shall have a spectral range capable of measuring the LRV of a specimen at 16 wavelength points spaced at 20 nm wavelength intervals from 400 nm across the visible spectrum. The instrument shall be capable of measuring a  $10^\circ$  visual field (Y10 or the  $10^\circ$  standard colorimetric observer).

7—See CIE Colorimetry 15:2004

The differences between the LRVs obtained from the 10° standard colorimetric observer and the 2° standard colorimetric observer (Y2) (CIE 15:2004) are generally minor. An LRV obtained from the 2° observer can be up to 1 point higher and for strong yellows up to 4 points higher.

The measured LRVs are affected by the geometric relationships between the measuring equipment geometry and the specimen, therefore a specific geometry is required. The instrument shall be designed such that a correctly positioned specimen is irradiated uniformly from all directions within the hemisphere bounded by its plane. The instrument aperture shall be delimited by the area over which the receiver senses flux rather than the area illuminated. Radiation reflected at the sampling aperture shall be evaluated uniformly at all directions within 5° of the axis of the collection beam. The axis of the reflected beam shall be 8° off the normal of the centre of the specimen plane in which the specimen is placed during measurements. The reduction in sphere efficiency due to specimen absorption shall be corrected to produce a linear output.

The d/8° shape of the instrument makes it applicable for high gloss surfaces as well as matt surfaces. A spectrophotometer designed to meet the same conditions as 7.2 but with the light path reversed is permitted. Where a single beam integrating sphere is used, the treatment of the outputs needs to include a correction for the reduction in sphere efficiency caused by specimen absorption. Without such a correction the instrument shall give a non-linear output.<sup>8</sup>

This is generally representative of a phase of daylight with a correlated colour temperature of approximately 6 500 K.

Measurement area shall be at least 7 mm diameter compatible with that provided by commercially available spectrophotometers.

The measurement area allows the LRV of solid colour surfaces and surfaces having a fine coloured pattern to be determined.

#### Preparation of test specimens

Three specimens shall be selected as being representative of the surface for the test. Where there is variability in the colour of the three specimens, then nine specimens shall be selected.<sup>9</sup>

The surface of the specimens shall be clean and representative of the surface of the material. There shall be no pressure marks on, or foreign matter attached to, the surface of the specimens to be tested. Plastic or painted specimens require no specimen preparation but shall be clean. Prior to starting the test, specimens that are sensitive to stroking shall be brushed with a clothing brush, once against the grain, where the specimen would appear darker, and then once with the grain, where the specimen would appear lighter and more homogeneous in structure. Cut pile carpets shall be brushed with a clothing brush in the direction of the natural pile lay before measurement.<sup>10</sup>

Prior to starting the test, all specimens shall be held between an observer and an unobstructed patch of sky seen through a north facing window glazed with clear glass. Any specimens that are light permeable, or non-opaque, shall not be measured.

Where there is concern with regard to the stability of the colour and appearance of a specimen over the period of the test, the specimen shall be tested in accordance with measurement requirements of the appropriate European or National Standard for the material as represented by the specimen.<sup>11</sup>

Specimens shall be large enough to extend beyond the measurement area of the instrument.

#### Procedure

The manufacturer's recommendations for monitoring the instrument performance and maintenance shall be followed.

<sup>8</sup>—Standard illuminant, CIE D65, (as defined in CIE 15:2004.)

<sup>9</sup>—Variability in the colour of the three specimens occurs where the difference between the highest and lowest LRV is W4

<sup>10</sup>—Surfaces that are not sensitive to stroking do not need to be pre-treated in this way.

<sup>11</sup>—For textiles the stability of the colour and appearance of a specimen is defined in BS EN ISO 105-B05 and BS 8475.

~~The instrument shall be switched on and have been allowed sufficient time for stabilization in accordance with the manufacturer's recommendations. Where applicable, it shall be ensured that the instrument has sufficient battery voltage and capacity to undertake the required measurements.~~

~~Select the measurement conditions required for calibration of the instrument being used as follows<sup>12</sup>:~~

- ~~• wavelength range and interval;~~
- ~~• size of aperture;~~
- ~~• specular component included;~~
- ~~• standard illuminant type;~~
- ~~• where there is choice of % UV, select 100 % UV.~~

~~The instrument shall be calibrated in accordance with the manufacturer's recommendations.~~

~~During the use of the instrument, repeat the calibration at regular intervals in accordance with the manufacturer's recommendations.~~

~~Where appropriate, re-calibration may be required at regular intervals during measurements.~~

### Test

~~The sequence to be followed may vary from one instrument to another, but shall include the following steps:~~

- ~~• the specimen shall be determined to be opaque, using the method shown above;~~
- ~~• the method of preparation and presentation of the specimens shall be selected;~~
- ~~• if the instrument conditions required to measure the specimen are not those used during the calibration, adjust to comply with the calibration requirements;~~
- ~~• measure the LRV of the specimen in accordance with this standard, using CIE Tristimulus Y10, Illuminant D65 and the 10° colorimetric observer;~~
- ~~• all measurements shall be taken with the instrument using even pressure without deforming the specimen.~~

~~When selecting the measuring points, they shall be distributed over the entire surface of the specimen:~~

- ~~• the measuring points for specimens that have a texture or surface structure shall be distributed over the surface so as to ensure that all differences in surface texture or structure are measured;~~
- ~~• the specimens shall be measured on a measurement grid as shown in Figure 8.~~
- ~~• for specimens which do not have a patterned or textured surface a specimen size of a minimum 150 mm × 100 mm shall be used. LRV measurements shall be taken at the centre points of a 75 mm × 75 mm grid that covers the surface of the specimen, as shown in Figure 8b.~~
- ~~• for multi coloured specimens where areas of the surface are composed of different uniform colours, which when viewed from a distance of 3 m remain distinct areas of colour, the LRV shall be measured as follows. At least four measurement points shall be located on each distinct area of colour. Following the first measurement at each measurement point the instrument shall be turned 90° three times and measurements taken after each 90° turn. The results of each measurement shall be recorded and the average LRV for each area of distinct colour determined.~~

~~The average LRV (LRVav) for the overall specimen is given by:~~

$$\bullet \text{ LRVav} = [(LRV_{av1} \times A1) + (LRV_{av2} \times A2) + (LRV_{avn} \times A_n)]/A$$

~~Where:~~

- ~~• LRVav = average LRV of the overall specimen (CIE Y10)~~

<sup>12</sup> —The sequence to be followed varies between different instruments

- ~~LRVav1 = average LRV of distinct colour “1” of the specimen (CIE Y10)~~
- ~~A1 = area of distinct colour “1” (m<sup>2</sup>)~~
- ~~LRVav2 = average LRV of distinct colour “2” of the specimen (CIE Y10)~~
- ~~A2 = area of distinct colour “2” (m<sup>2</sup>)~~
- ~~LRVavn = average LRV of the last distinct colour “n” on the specimen (CIE Y10)~~
- ~~An = area of the last distinct colour “n” (m<sup>2</sup>)~~
- ~~A = total area of specimen (m<sup>2</sup>).~~

The area of the specimen is to be either 0,202 5 m<sup>2</sup> for a 450 mm × 450 mm specimen or 0.81 m<sup>2</sup> for a 900 mm × 900 mm specimen.

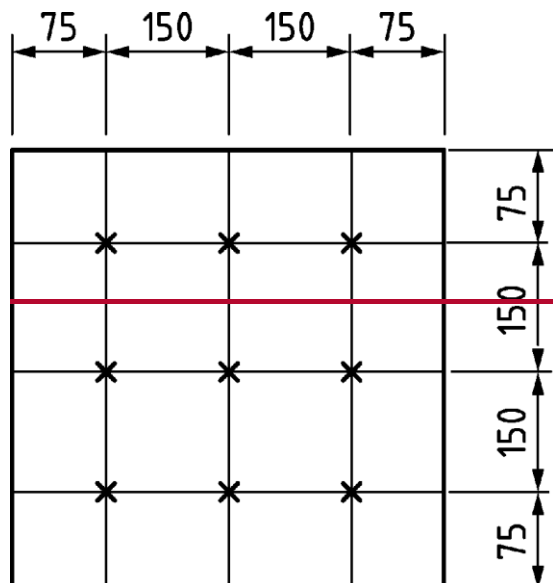
Where the surface comprises many small colour specks or chips which, when viewed from a distance of 3 m, assume the appearance of one slightly varying colour, the average LRV (LRVav) is found in accordance with 6.2.2.4.

Measurements on general surfaces, including carpet specimens, shall be taken on specimens of a minimum size of 450 mm × 450 mm where the nature of the pattern is such that a specimen size of these dimensions is fully representative of the pattern. LRV measurements shall be taken at the 9 centre points of each of the 150 mm × 150 mm area grids which cover the surface of the specimen, by placing the measurement point at the centre of equal areas of the specimen surface, as shown in Figure 8a).

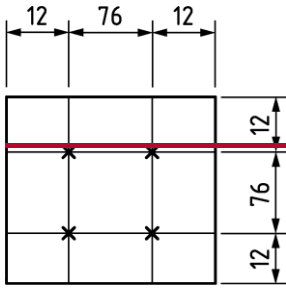
Following the first measurement at each measurement point the instrument shall be turned 90° three times and measurements taken after each 90° turn. The results of each measurement shall be recorded and the average LRV (LRVav) for the specimen determined.

Where patterns on surfaces cannot be fully represented by a specimen of this size (450 mm × 450 mm) then a specimen size of 900 mm × 900 mm shall be used and the LRV measurements shall be taken at the 36 centre points of each of the 150 mm × 150 mm grid, set out to place the measurement point at the centre of equal areas of the specimen surface.

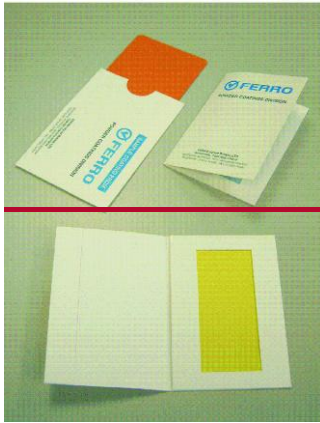
Dimensions in millimetres



a) Measurement grid for 450 × 450 mm specimens



b) Measurement grid for 100 × 150 mm specimens



c) Typical paint samples (150 mm × 100 mm)

Figure 8 Measurement grids for specimens

#### Expression of results

The instrument shall, either independently or with additional software and hardware, calculate the LRV, which is the CIE Tristimulus Y10 value.

Additionally the x10, y10 of the colour shall be calculated. Output and record the LRV as required.

#### Test report

The results of all the LRV measurements for the specimen surface shall be reported in a way that enables the LRV difference between two visually adjacent surfaces to be readily determined. The test report shall contain at least the following information:

- the reference to this application guide;
- name of organization carrying out the test;
- date of test;
- the specimen identification details;
- the number of specimens measured;
- the method of specimen preparation used;
- identification of the instrument used including, where appropriate, manufacturer, model, serial number and optical geometry;
- details of the conditions of test;
- measurement area and observer angle;
- description of specimen including CIE Y10, x10, y10 colour identification;
- description of additional feature, e. g. texture, gloss or grain;
- size of specimen used in the test;
- LRV measurements for all measurement points;



- average LRV (LRVav) measurement for each specimen and the range of measured LRVs;
- for multi coloured specimens the average LRV for the overall specimen (LRVav) and the average LRV for each of the distinct colours on the specimen;
- any deviations from the specified procedures.

In the test report inclusion of a visual record of the specimen, e. g. a photograph or scan is useful.

### 1.2. Specific assessment criteria for stainless steel

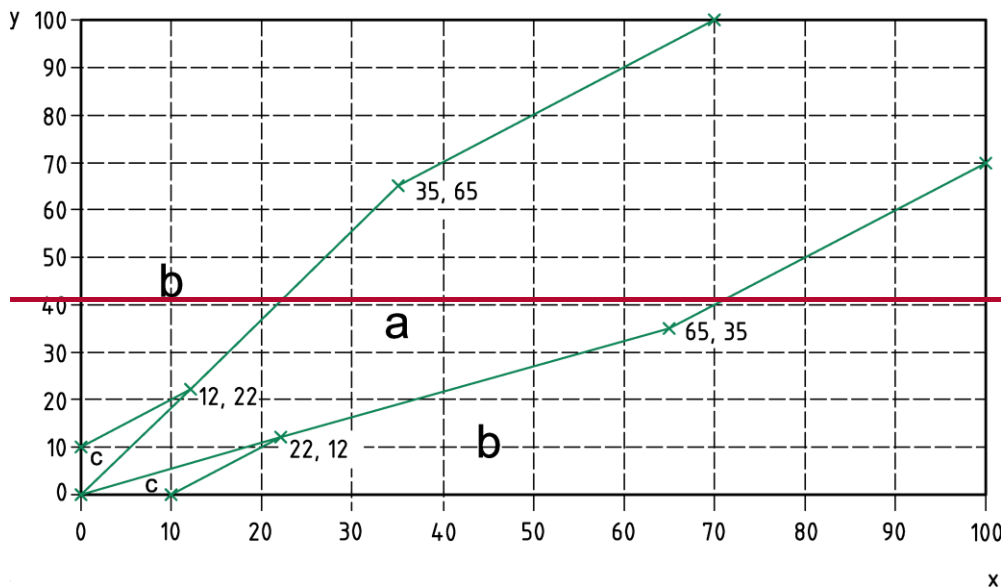
Stainless steel has many unique properties that make it a desirable material for handrail, grab rail and grab pole applications but as it is a reflective surface it has had problems with consistency when measuring and can give a variance in excess of 5 points. The following condition shall then be considered when assessing stainless steel:

- Stainless steel in all other applications than the specific situation specified in 7.2 shall meet the contrast requirement to its background in accordance with the assessment/measuring methodology above and shall be assessed with an increased difference of 35 points (0,35) to ensure that the variance in readings doesn't drop below 30 points.

### 1.3. Method of assessing contrast with LRV values established

The contrast shall be assessed using Figure 9 which has been derived from the following:

- 1) TSI/DIN formula up to a point then 30 points constant with an initial 10 point minimum difference for non flooring finishes;
- 2) Flooring finishes uses the lines derived from the formula from 0 up to the 30 point difference point on the graph (this is required due to the degradation of a flooring material with use or wear).



#### Key

'a' LRV values that intersect in this area do not achieve an acceptable contrast level

'b' LRV values that intersect in this area achieve an acceptable contrast level

'c' LRV values that intersect in this area achieve an acceptable contrast level ONLY if the material being assessed is a flooring material

x the LRV of the object L0

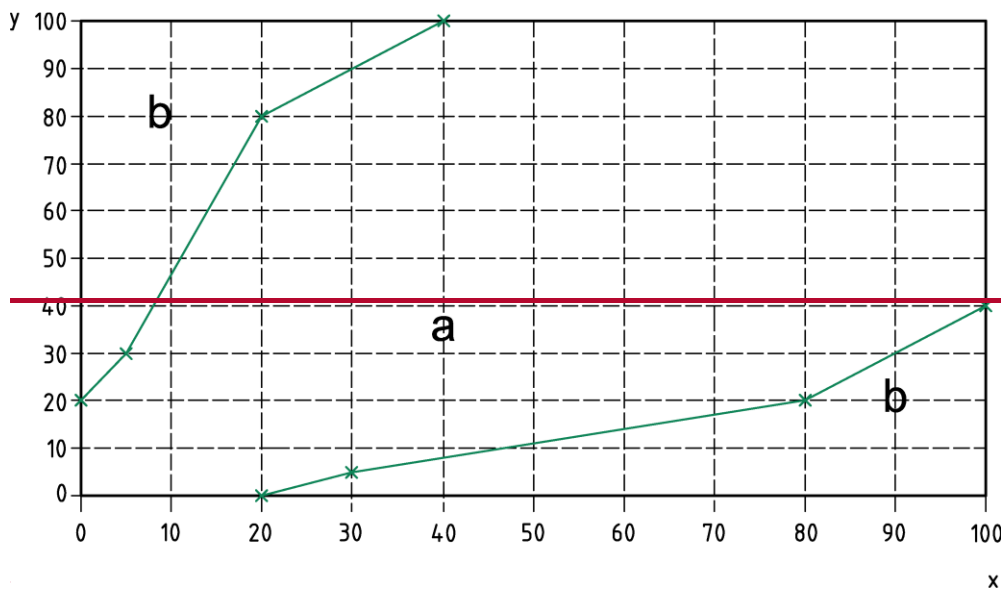
y the LRV of the background or adjacent surface Lh

Figure 9: Acceptable and not acceptable contrast chart

The contrast measured value shall be maintained in normal operation and not just when assessed as new. Therefore when reviewed at type test etc. the selected materials chosen to deliver requirements shall be demonstrated to have suitable properties that make them fit for purpose, e.g. decals shall be UV stable and colour fast as applicable to the relevant application. ISO 17398 shall be used when assessing the durability of signage and decals.

#### 1.4.— Specific requirements for signage

When the LRV values for the parts of the sign are known then the simple calculation based on 0,6 minimum is all that is required. It is accepted that the areas marked 'b' in the following diagram correspond to the fulfilment of this requirement..



#### Key

a' LRV values that intersect in this area do not achieve an acceptable contrast level

'b' LRV values that intersect in this area achieve an acceptable contrast level

x the LRV of the background or adjacent surface Lh

y the LRV of the character Lc (number, letter or symbol)

Figure 10: Contrast for signage

#### 1.5.— Specific requirements for displays

As above when the relevant criteria from the electronic displays is known then the simple calculation based on 0,6 minimum is all that is required.

The criteria that are pertinent to this assessment are:

- 1) visual acuity of 0,3 shall be the assumed minimum with a recommended 0,1;
- 2) reading distance range, height and angle range of the display, height the eye points shall be assumed to be 1,5 m above the floor;
- 3) ambient light limits;
- 4) luminance of the display and reflection of the screen (including the protective housing/cover/ glass);
- 5) character heights (quantity of information and size of display are key consideration when defining the character height).

Points 1 to 5 can be assessed independently to the installation (e.g. under laboratory conditions) except point 3 which is dependent on the installation so can only be defined as a set of limits under which a display is acceptable.

### 1.6.— Self-contrast

Visual bands consisting of two separate colours that have a minimum difference in LRV of 60 points can be considered to be adequate to achieve contrast against varying lighting conditions and backgrounds.

Regarding stainless steel grab poles, grab rails and handrails (including bends in that rail or pole) the use of stainless steel with a surface finish of K300 to K500 is sufficient for the item to be considered as a self-contrasting pole (when the lighting is in accordance with the requirements of the TSI).

## 2.— Readability of a typeface

Written information should use Sans Serif fonts, in mixed case (i.e. not in capital letters only). Descenders (i.e. part of any of the characters g, j, p, q or y which protrudes below the level of the baseline as shown in the figure below) and ascenders (i.e. part of any of the characters b, d, f, h, i, j, k, l or t which protrudes above the x height of the characters as shown in the figure below) should not be compressed. Descenders should have a minimum size ratio of 20% to the upper case characters.



### Key

a Baseline

b Descender height

c Ascender height

d x-height of character

e Uppercase character height

Figure 11: typeface—definitions

## 3.— Palm operation

A palm operated device is a device operable by the palm or any part of the hand in its working position, not requiring fingers to be unclenched

The design need is that passengers with painful conditions, which affect their joints such as arthritis, may be unable to exert any force with the tip of a single finger and they are likely to experience discomfort or pain if they do. Many will not be able to unclench their fingers to do this or perform any pulling action.

Assessment of palm operation of a control device can be done by pulling or pushing the device depending on its normal mode of operation with a clenched fist or hand (without extending fingers) as per the definition above.

The following figure represents a device that can be used to represent a clenched fist when assessing any need to pull or push a control, control device or component. The representative clenched fist will be manufactured from aluminium and attached to a force meter for the tests.

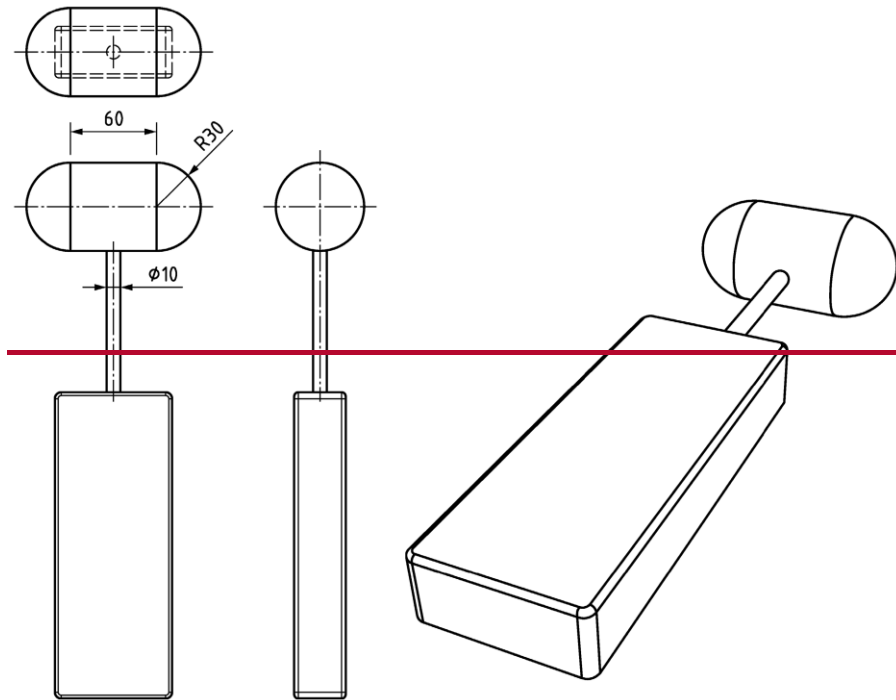


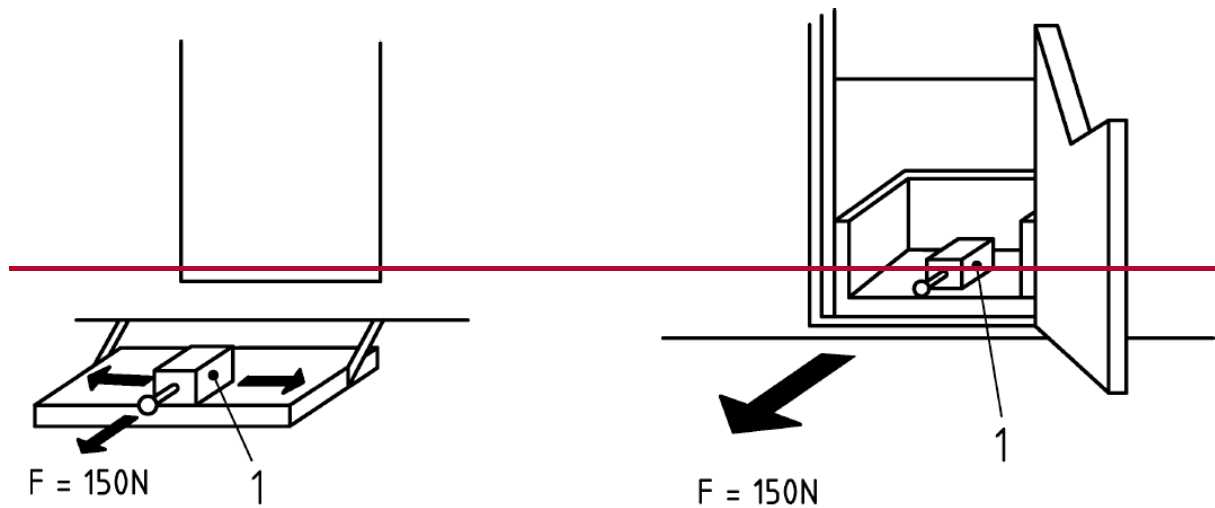
Figure 12: clenched fist device attached to a force meter

#### 4. Slip resistance of boarding aids and rolling stock access steps

This test method is to determine the slip resistance of the surface of entrance steps, separate, attachable or integral, ramps and lifts.

##### 4.1. Preparation and procedure

1. Place the step (separate, attachable or integral) in an horizontal position  $\pm 2^\circ$  (3,5 %) (See Figure below);
2. Carry out the test at an ambient temperature of  $15^\circ\text{C} \pm 10^\circ\text{C}$ ;
3. Roughen the surface of the rubber sole of the friction test piece once before each test by placing it on a sheet of grade 60 to 63 emery paper and pull it, at a constant rate of  $(150 \pm 10)$  mm/s, a distance of 300 mm across the surface of the emery paper;
4. Spray evenly the top surface of the tread to be tested with a minimum of 1 l of drinking water immediately prior to carrying out procedures 5) and 6);
5. Place the friction test piece upon the step;
6. Apply a horizontal force of 150 N for approximately 10 s, using a load cell, to the friction test piece during which there shall be no visually discernible movement of the friction test piece;
7. The above procedure 5) and 6) shall be carried out as many times as necessary to test the complete surface of the tread(s) of the step(s).



### Key

1 Friction test piece

Figure 13: Friction Test Piece shown on an external or moveable step and an integral step

### 4.2 — Expression of results

The item under assessment shall be considered to have passed the test and, in case of a rolling stock, for its step(s) to be suitably slip resistant in accordance with the requirements if during the test there was no visually discernible movement of the friction test piece.

### 4.3 — Test Report

A test report shall be prepared stating whether the item under assessment passed or failed the test.

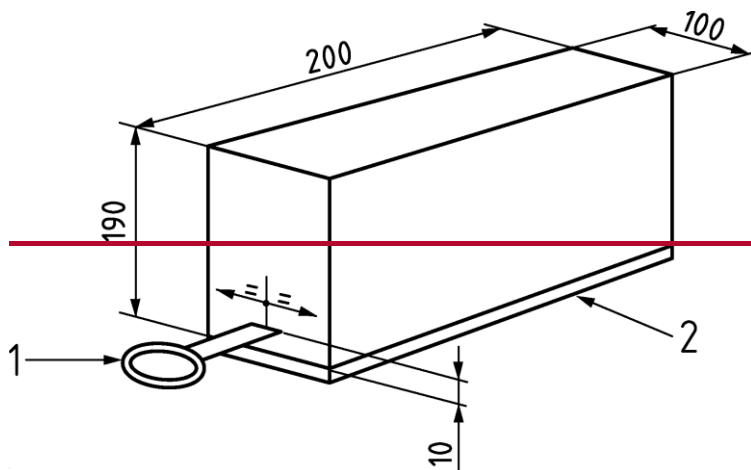
The report shall state the following, if applicable:

- the approximate degree of movement of the friction test piece on the step;
- the position of the friction test piece on the step when movement was discerned.

### 4.4 — Friction test piece

The friction test piece is comprised of a 30 kg steel block, 200 mm long, 100 mm wide approximately 190 mm deep (depending on the density of the steel) with an 8 mm thick rubber sole bonded to its base. The rubber sole shall be as specified in ISO 4649:2010. A typical friction test piece is shown in the figure below.

Dimensions in millimetres



**Key**~~1 Pulling hook securely attached~~~~2 8 mm rubber sole~~~~Figure 14: friction test piece~~**~~5. Stowing a baby nappy changing table (Interoperability Constituent)~~**

~~Assessment should be shown to be within the normal reach of the agreed design range (e.g. 5%ile female to 95%ile male in a wheelchair) demonstrated by 3D model/drawing and relevant anthropometric data or within the reach envelopes as described in Figure L.1 of the PRM TSI.~~

~~Assessment of the stowing operation: the force required to stow the baby changing table shall not exceed 25 N. Stowing that baby changing table with only one hand should be possible.~~