



ORGANISATION INTERGOUVERNEMENTALE POUR LES TRANSPORTS INTERNATIONAUX FERROVIAIRES  
ZWISCHENSTAATLICHE ORGANISATION FÜR DEN INTERNATIONALEN EISENBAHNVERKEHR  
INTERGOVERNMENTAL ORGANISATION FOR INTERNATIONAL CARRIAGE BY RAIL

---

**Commission d'experts techniques  
Fachausschuss für technische Fragen  
Committee of Technical Experts**

**CTE8/5.3  
Draft version 1  
05.03.2015**

Original: EN

**UTP WAG 2015**

---

Amendments to Appendices G and J to M

## 1. INTRODUCTION

The Appendices to UTP WAG 2015 contain references to the ERA technical documents published on the ERA website. CTE recognised that ERA updates these documents regularly and consequently the UTP WAG 2015 should also be amended in order to maintain full equivalence.

## 2. AMENDMENTS

### 2.1 Appendix G

On 20 January 2015, ERA published on its website an updated technical document entitled “List of fully UIC approved composite brake blocks (CBB) for international transport ([ERA/TD/2009-02/INT version 14.0](#))”. The amendment in ERA’s document is in line with recent developments and progress in the manufacturers’ production of CBB. Compared to version 12.0, published on 14 August 2013, three new positions have been added to table 2.1.

#### Amendment to Appendix G:

Text: “This Appendix is the “List of fully approved K composite brake blocks for international transport”, reference: ERA/TD/2009-02/INT version 12.0, 14 August 2013.”

should be replaced by:

“This Appendix is the “List of fully approved K composite brake blocks for international transport”, reference: ERA/TD/2009-02/INT version 14.0 of 20 January 2015.”

### 2.2 Appendices J to M

On 2.12.2014, ERA published on its website an updated technical document: Attachment devices for rear-end signals, clearance for draw hooks, space for shunting staff operation and footsteps and handrails ([ERA/TD/2012-04/INT version 1.3](#)). The amendment in ERA’s document concerns the correction of editorial mistakes, in particular in Figure 7: position of shunter handrails. The dimension  $\Rightarrow 210$  mm was wrong, and should instead read  $\Rightarrow < 210$  mm.

#### Amendments to Appendices J to M:

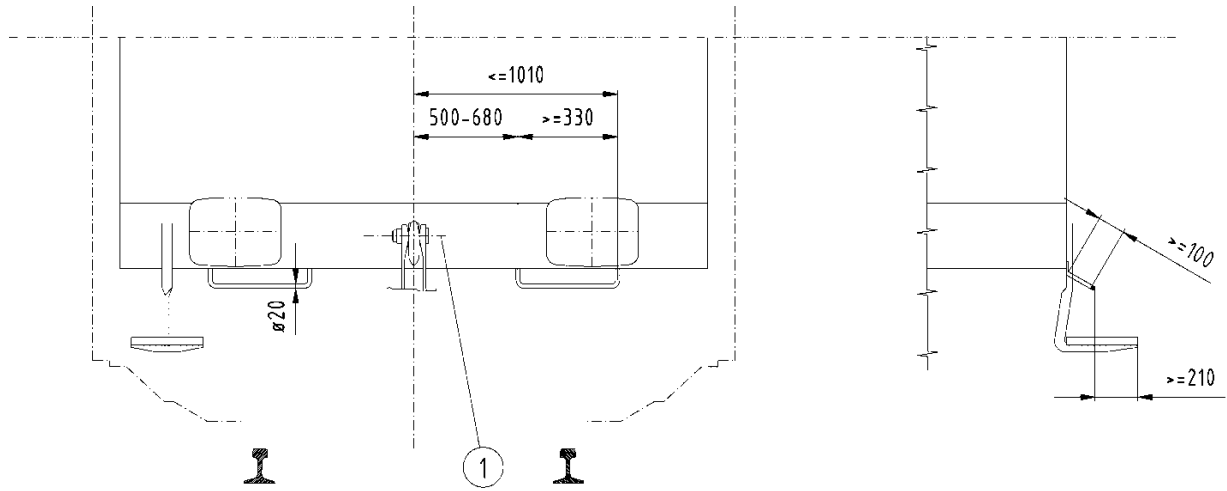
Text: “*This appendix is a transcription of section 1 of the ERA technical document ERA/TD/2012-04/INT version 1.2 of 18.01.2013 published on the ERA website and referred to in the WAG TSI. It appears in full width in order that the drawings remain legible.*”

should be replaced by:

“*This appendix is a transcription of section 1 of the ERA technical document ERA/TD/2012-04/INT version 1.3 of 2 December 2014 published on the ERA website and referred to in the WAG TSI. It appears in full width in order that the drawings remain legible.*”

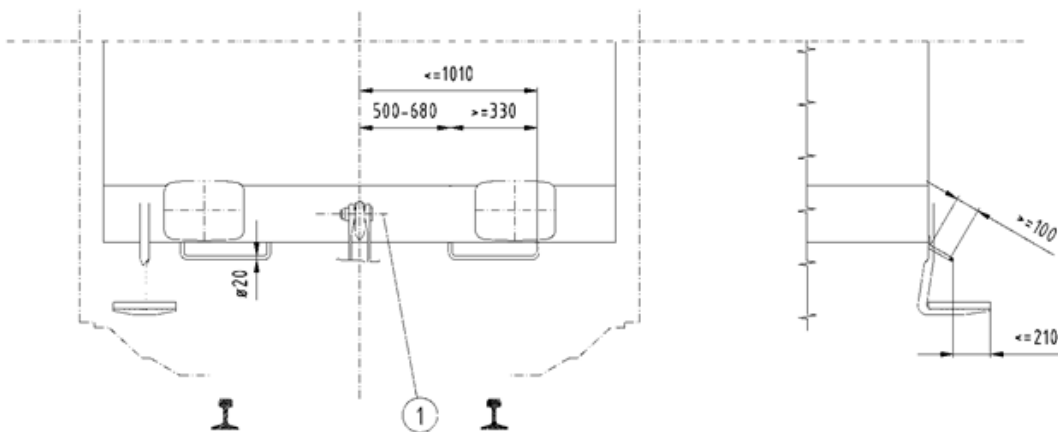
Amendment to Figure 7 of Appendix M:

Figure 7: “



”

should be replaced with the new Figure 7: “



”

### 3. PROPOSAL FOR DECISION:

The Committee of Technical Experts adopts the following decisions:

1. CTE 8 adopts the amendments to Appendices G and J to M as set out in point 2 of this document.
2. The OTIF Secretariat will notify the CTE decision and the amendments concerned in accordance with the process described in Article 35 §§ 3 and 4 of the Convention.
3. The OTIF Secretariat will publish the amendments to UTP WAG 2015 on the OTIF website in the same place as UTP WAG 2015 itself.